

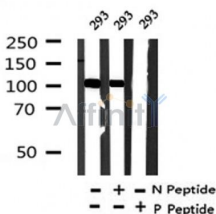
## Phospho-CYLD(Ser422) Ab

Cat.#: AF4337  
 Size: 50ul,100ul,200ul

Concn.: 1mg/ml  
 Source: Rabbit

Mol.Wt.: 108kDa  
 Clonality: Polyclonal

|                               |   |
|-------------------------------|---|
| Application:                  | WB 1:500-1:2000   |
| Reactivity:                   | Human,Mouse,Rat   |
| Purification:                 | The Ab is from purified rabbit serum by affinity purification via sequential chromatography on phospho- and non-phospho-peptide affinity columns.   |
| Specificity:                  | Phospho-CYLD(Ser422) Ab detects endogenous levels of CYLD only when phosphorylated at Ser422.   |
| Immunogen:                    | A synthesized peptide derived from human CYLD around the phosphorylation site of Ser422.  |
| Uniprot:                      | Q9NQC7  |
| Subcellular Location:         | Cytoplasm. Cytoplasm > perinuclear region. Cytoplasm > cytoskeleton. Cell membrane. Detected at the microtubule cytoskeleton during interphase. Detected at the midbody during telophase.             |
| Tissue Specificity:           | Detected in fetal brain, testis, and skeletal muscle, and at a lower level in adult brain, leukocytes, liver, heart, kidney, spleen, ovary and lung. Isoform 2 is found in all tissues except kidney. |
| Similarity:                   | Belongs to the peptidase C19 family.  |
| Storage Condition and Buffer: | Rabbit IgG in phosphate buffered saline , pH 7.4, 150mM NaCl, 0.02% sodium azide and 50% glycerol.Store at -20 °C.Stable for 12 months from date of receipt.  |



Western blot analysis of Phospho-CYLD(Ser422) in lysates of 293 , using Phospho-CYLD(Ser422) Ab(AF4337).

**IMPORTANT:** For western blot, incubate membrane with diluted primary Ab in 5% w/v milk , 1X TBS, 0.1% Tween@20 at 4°C with gentle shaking, overnight.



**Affinity Biosciences**

website: [www.affbiotech.com](http://www.affbiotech.com)

order: [order@affbiotech.com](mailto:order@affbiotech.com)

---

For Research Use Only. Not for use in diagnostic and therapeutic procedures. Not for resale without express authorization.