

## Phospho-alpha-Actinin (Tyr193) Ab

Cat.#: AF4329	Concn.: 1mg/ml	Mol.Wt.: 105kDa
Size: 50ul,100ul,200ul	Source: Rabbit	Clonality: Polyclonal

**Application:** WB 1:500-1:2000

**Reactivity:** Human,Mouse,Rat

**Purification:** The Ab is from purified rabbit serum by affinity purification via sequential chromatography on phospho- and non-phospho-peptide affinity columns.

**Specificity:** Phospho-alpha-Actinin (Tyr193) Ab detects endogenous levels of alpha-Actinin only when phosphorylated at Tyr193.

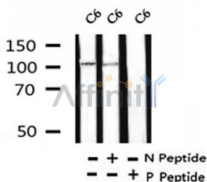
**Immunogen:** A synthesized peptide derived from human alpha-Actinin around the phosphorylation site of Tyr193.

**Uniprot:** P12814

**Subcellular Location:** Cytoplasm > cytoskeleton. Cytoplasm > myofibril > sarcomere > Z line. Colocalizes with MYOZ2 and PPP3CA at the Z-line of heart and skeletal muscle.

**Similarity:** Belongs to the alpha-actinin family.

**Storage Condition and Buffer:** Rabbit IgG in phosphate buffered saline , pH 7.4, 150mM NaCl, 0.02% sodium azide and 50% glycerol.Store at -20 °C.Stable for 12 months from date of receipt.



Western blot analysis of Phospho-alpha-Actinin (Tyr193) in lysates of C6, using Phospho-alpha-Actinin (Tyr193) Ab(AF4329).

**IMPORTANT:** For western blot, incubate membrane with diluted primary Ab in 5% w/v milk , 1X TBS, 0.1% Tween@20 at 4°C with gentle shaking, overnight.

For Research Use Only. Not for use in diagnostic and therapeutic procedures. Not for resale without express authorization.