

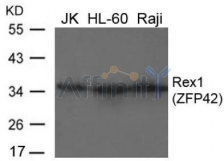
Rex1(ZFP42) Ab

Cat.#: AF4104
Size: 50ul,100ul,200ul

Concn.: 1mg/ml
Source: Rabbit

Mol.Wt.: 35kd
Clonality: Polyclonal

Application:	WB 1:500-1:1000
Reactivity:	Human
Purification:	The antiserum was purified by peptide affinity chromatography using SulfoLink™ Coupling Resin (Thermo Fisher Scientific).
Specificity:	The Ab detects endogenous level of total Rex1(ZFP42) protein.
Immunogen:	Peptide sequence around aa.10~14(K-T-R-H-Q) derived from Human Rex1(ZFP42).
Uniprot:	Q96MM3
Description:	Involved in self-renewal property of ES cells. May be involved in transcriptional regulation.
Subcellular Location:	Nucleus.
Tissue Specificity:	Expressed in kidney, epidermal keratinocytes, prostate epithelial cells, bronchial and small airway lung epithelial cells (at protein level). Expressed in malignant kidney and several carcinoma cell lines (at protein level). Expressed in embryonic stem cells, kidney, epidermal keratinocytes, prostate epithelial cells, bronchial and small airway lung epithelial cells. Expressed in embryonal carcinomas, seminomas, malignant kidney and several carcinoma cell lines.
Similarity:	Belongs to the krueppel C2H2-type zinc-finger protein family.
Storage Condition and Buffer:	Supplied at 1.0mg/mL in phosphate buffered saline (without Mg ²⁺ and Ca ²⁺), pH 7.4, 150mM NaCl, 0.02% sodium azide and 50% glycerol.



Western blot analysis of extracts from JK, HL-60 and Raji cells using Rex1(ZFP42) Ab

IMPORTANT: For western blot, incubate membrane with diluted primary Ab in 5% w/v milk , 1X TBS, 0.1% Tween@20 at 4°C with gentle shaking, overnight.

For Research Use Only. Not for use in diagnostic and therapeutic procedures. Not for resale without express authorization.