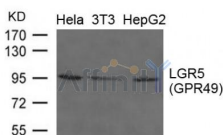


LGR5(GPR49) Ab

Cat.#: AF4102	Concn.: 1mg/ml	Mol.Wt.: 95kd
Size: 50ul,100ul,200ul	Source: Rabbit	Clonality: Polyclonal

Application:	WB 1:500-1:1000
Reactivity:	Human,Mouse
Purification:	The antiserum was purified by peptide affinity chromatography using SulfoLink™ Coupling Resin (Thermo Fisher Scientific).
Specificity:	The Ab detects endogenous level of total LGR5(GPR49) protein.
Immunogen:	Peptide sequence around aa.490~494(K-I-S-N-Q) derived from Human LGR5(GPR49).
Uniprot:	O75473
Description:	Orphan receptor. Stem cell marker of the intestinal epithelium and the hair follicule. Target gene of Wnt signaling.
Subcellular Location:	Cell membrane.
Tissue Specificity:	Expressed in skeletal muscle, placenta, spinal cord, and various region of brain. Expressed at the base of crypts in colonic and small mucosa stem cells. In premalignant cancer expression is not restricted to the cript base. Overexpressed in cancers of the ovary, colon and liver.
Similarity:	Belongs to the G-protein coupled receptor 1 family.
Storage Condition and Buffer:	Supplied at 1.0mg/mL in phosphate buffered saline (without Mg2+ and Ca2+), pH 7.4, 150mM NaCl, 0.02% sodium azide and 50% glycerol.



Western blot analysis of extracts from HeLa, 3T3 and HepG2 cells using LGR5(GPR49) Ab

in 5% w/v milk , 1X TBS, 0.1% Tween@20 at 4°C with gentle shaking,
overnight.

For Research Use Only. Not for use in diagnostic and therapeutic
procedures. Not for resale without express authorization.