

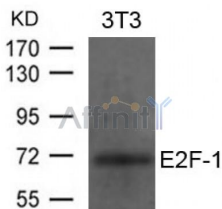
## E2F-1 Ab

Cat.#: AF4091  
Size: 50ul,100ul,200ul

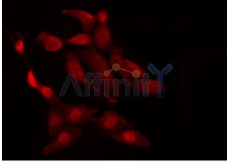
Concn.: 1mg/ml  
Source: Rabbit

Mol.Wt.: 70kd  
Clonality: Polyclonal

Application:	WB 1:500-1:2000, IF/ICC 1:100-1:500
Reactivity:	Human,Mouse
Purification:	The antiserum was purified by peptide affinity chromatography using SulfoLink™ Coupling Resin (Thermo Fisher Scientific).
Specificity:	The Ab detects endogenous levels of total E2F-1 protein.
Immunogen:	Peptide sequence around aa.430~434(G-D-L-T-P) derived from Human E2F-1.
Uniprot:	Q01094
Description:	Transcription activator that binds DNA cooperatively with dp proteins through the E2 recognition site, 5'-TTTC[CG]CGC-3' found in the promoter region of a number of genes whose products are involved in cell cycle regulation or in DNA replication. The DRTF1/E2F complex functions in the control of cell-cycle progression from G1 to S phase. E2F-1 binds preferentially RB1 protein, in a cell-cycle dependent manner. It can mediate both cell proliferation and p53-dependent apoptosis. P53 and E2F-1 cooperate to mediate apoptosis.
Subcellular Location:	Nucleus.
Similarity:	Belongs to the E2F/DP family.
Storage Condition and Buffer:	Supplied at 1.0mg/mL in phosphate buffered saline (without Mg2+ and Ca2+), pH 7.4, 150mM NaCl, 0.02% sodium azide and 50% glycerol.



Western blot analysis of extracts from 3T3 cells using E2F-1 Ab



AF4091 staining HeLa by IF/ICC. The sample were fixed with PFA and permeabilized in 0.1% Triton X-100, then blocked in 10% serum for 45 minutes at 25°C. The primary Ab was diluted at 1/200 and incubated with the sample for 1 hour at 37°C. An Alexa Fluor 594 conjugated goat anti-rabbit IgG (H+L) Ab, diluted at 1/600, was used as the secondary Ab.

**IMPORTANT:** For western blot, incubate membrane with diluted primary Ab in 5% w/v milk , 1X TBS, 0.1% Tween@20 at 4°C with gentle shaking, overnight.

For Research Use Only. Not for use in diagnostic and therapeutic procedures. Not for resale without express authorization.