

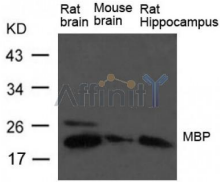
## **MBP(myelin basic protein) Ab**

Cat.#: AF4085  
Size: 50ul,100ul,200ul

Concn.: 1mg/ml  
Source: Rabbit

Mol.Wt.: 14~33kd  
Clonality: Polyclonal

Application:	WB 1:500-1:1000
Reactivity:	Human,Mouse,Rat
Purification:	The antiserum was purified by peptide affinity chromatography using SulfoLink™ Coupling Resin (Thermo Fisher Scientific).
Specificity:	The Ab detects endogenous level of total MBP(myelin basic protein) protein.
Immunogen:	Peptide sequence around aa.291~295(G-G-R-D-S).
Uniprot:	P02686
Description:	The classic group of MBP isoforms (isoform 4-isoform 14) are with PLP the most abundant protein components of the myelin membrane in the CNS. They have a role in both its formation and stabilization. The smaller isoforms might have an important role in remyelination of denuded axons in multiple sclerosis. The non-classic group of MBP isoforms (isoform 1-isoform 3/Golli-MBPs) may preferentially have a role in the early developing brain long before myelination, maybe as components of transcriptional complexes, and may also be involved in signaling pathways in T-cells and neural cells. Differential splicing events combined with optional post-translational modifications give a wide spectrum of isomers, with each of them potentially having a specialized function. Induces T-cell proliferation.
Subcellular Location:	Myelin membrane. Cytoplasmic side of myelin.
Tissue Specificity:	MBP isoforms are found in both the central and the peripheral nervous system, whereas Golli-MBP isoforms are expressed in fetal thymus, spleen and spinal cord, as well as in cell lines derived from the immune system.
Similarity:	Belongs to the myelin basic protein family.
Storage Condition and Buffer:	Supplied at 1.0mg/mL in phosphate buffered saline (without Mg <sup>2+</sup> and Ca <sup>2+</sup> ), pH 7.4, 150mM NaCl, 0.02% sodium azide and 50% glycerol.



Western blot analysis of extract from Rat brain, Mouse brain and Rat hippocampus Tissue using MBP Ab

**IMPORTANT:** For western blot, incubate membrane with diluted primary Ab in 5% w/v milk , 1X TBS, 0.1% Tween@20 at 4°C with gentle shaking, overnight.

For Research Use Only. Not for use in diagnostic and therapeutic procedures. Not for resale without express authorization.