

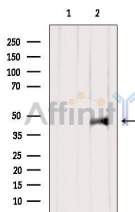
## CNPase Ab

Cat.#: AF4084  
Size: 50ul,100ul,200ul

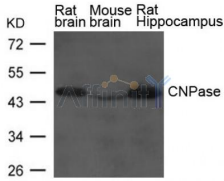
Concn.: 1mg/ml  
Source: Rabbit

Mol.Wt.: 47kd  
Clonality: Polyclonal

Application:	WB 1:500-1:1000
Reactivity:	Human,Mouse,Monkey
Purification:	The antiserum was purified by peptide affinity chromatography using SulfoLink™ Coupling Resin (Thermo Fisher Scientific).
Specificity:	The Ab detects endogenous level of total CNPase protein.
Immunogen:	Peptide sequence around aa.80~84 (M-V-S-A-D).
Uniprot:	P09543
Description:	Nucleoside 2',3'-cyclic phosphate + H <sub>2</sub> O = nucleoside 2'-phosphate.
Subcellular Location:	Membrane. Melanosome. Firmly bound to membrane structures of brain white matter. Identified by mass spectrometry in melanosome fractions from stage I to stage IV.
Similarity:	Belongs to the 2H phosphoesterase superfamily. CNPase family.
Storage Condition and Buffer:	Rabbit IgG in phosphate buffered saline , pH 7.4, 150mM NaCl, 0.02% sodium azide and 50% glycerol.Store at -20 °C.Stable for 12 months from date of receipt.



Western blot analysis of extracts from VERO, using CNPase Ab. The lane on the left was treated with blocking peptide.



Western blot analysis of extract from Rat brain, Mouse brain and Rat hippocampus Tissue using CNPase Ab

**IMPORTANT:** For western blot, incubate membrane with diluted primary Ab in 5% w/v milk, 1X TBS, 0.1% Tween@20 at 4°C with gentle shaking, overnight.

For Research Use Only. Not for use in diagnostic and therapeutic procedures. Not for resale without express authorization.