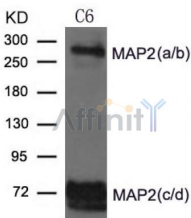


## MAP2 Ab

|                               |   |  |
|-------------------------------|---|--|
| Cat.#: AF4081                 | Concn.: 1mg/ml  | Mol.Wt.: 55-75(2c/2d),<br>280(2a/2b)kd |
| Size: 50ul,100ul,200ul        | Source: Rabbit  | Clonality: Polyclonal                  |
| Application:                  | WB: 1:500~1:1000 IF 1:200   |  |
| Reactivity:                   | Human,Mouse,Rat   |  |
| Purification:                 | The antiserum was purified by peptide affinity chromatography using SulfoLink™ Coupling Resin (Thermo Fisher Scientific).   |  |
| Specificity:                  | The Ab detects endogenous level of total MAP2 protein.  |  |
| Immunogen:                    | Peptide sequence around aa.1819~1823 (T-A-A-L-A) derived from Human MAP2.   |  |
| Uniprot:                      | P11137  |  |
| Description:                  | The exact function of MAP2 is unknown but MAPs may stabilize the microtubules against depolymerization. They also seem to have a stiffening effect on microtubules. |  |
| Subcellular Location:         | Cytoplasm, cytoskeleton.  |  |
| Storage Condition and Buffer: | Supplied at 1.0mg/mL in phosphate buffered saline (without Mg <sup>2+</sup> and Ca <sup>2+</sup> ), pH 7.4, 150mM NaCl, 0.02% sodium azide and 50% glycerol.        |  |



Western blot analysis of extract from C6 cells using MAP2 Ab.



AF4081 staining U87 by IF/ICC. The sample were fixed with PFA and permeabilized in 0.1% Triton X-100,then blocked in 10% serum for 45 minutes at 25°C. The primary Ab was diluted at 1/200 and incubated with the sample for 1 hour at 37°C. An Alexa Fluor 594 conjugated goat anti-rabbit IgG (H+L) Ab, diluted at 1/600, was used as the secondary Ab.

**IMPORTANT:** For western blot, incubate membrane with diluted primary Ab in 5% w/v milk , 1X TBS, 0.1% Tween@20 at 4°C with gentle shaking, overnight.

For Research Use Only. Not for use in diagnostic and therapeutic procedures. Not for resale without express authorization.