

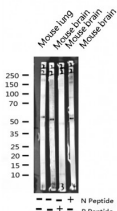
## Phospho-p70 S6 Kinase beta (Ser423) Ab

Cat.#: AF3486  
Size: 100ul,200ul

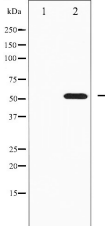
Concn.: 1mg/ml  
Source: Rabbit

Mol.Wt.: 53kDa  
Clonality: Polyclonal

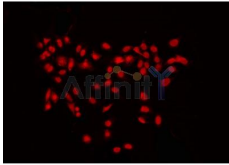
Application:	WB 1:500-1:2000, IF/ICC 1:100-1:500
Reactivity:	Human,Mouse
Purification:	The Ab is from purified rabbit serum by affinity purification via sequential chromatography on phospho- and non-phospho-peptide affinity columns.
Specificity:	Phospho-p70 S6 Kinase beta (Ser423) Ab detects endogenous levels of p70 S6 Kinase beta only when phosphorylated at Serine 423.
Immunogen:	A synthesized peptide derived from human p70 S6 Kinase beta around the phosphorylation site of Serine 423.
Uniprot:	Q9UBS0
Description:	This gene encodes a member of the RSK (ribosomal S6 kinase) family of serine/threonine kinases. This kinase contains 2 nonidentical kinase catalytic domains and phosphorylates the S6 ribosomal protein and eucaryotic translation initiation factor 4B (eIF4B).
Subcellular Location:	Nucleus;
Similarity:	Belongs to the protein kinase superfamily. AGC Ser/Thr protein kinase family. S6 kinase subfamily.
Storage Condition and Buffer:	Rabbit IgG in phosphate buffered saline , pH 7.4, 150mM NaCl, 0.02% sodium azide and 50% glycerol.Store at -20 °C.Stable for 12 months from date of receipt.



Western blot analysis of Phospho-p70 S6 Kinase beta (Ser423) expression in various lysates



Western blot analysis of p70 S6 Kinase beta phosphorylation expression in EGF treated K562 whole cell lysates, The lane on the left is treated with the antigen-specific peptide.



AF3486 staining K562 by IF/ICC. The sample were fixed with PFA and permeabilized in 0.1% Triton X-100, then blocked in 10% serum for 45 minutes at 25°C. The primary Ab was diluted at 1/200 and incubated with the sample for 1 hour at 37°C. An Alexa Fluor 594 conjugated goat anti-rabbit IgG (H+L) Ab, diluted at 1/600, was used as the secondary Ab.

**IMPORTANT:** For western blot, incubate membrane with diluted primary Ab in 5% w/v milk, 1X TBS, 0.1% Tween@20 at 4°C with gentle shaking, overnight.

For Research Use Only. Not for use in diagnostic and therapeutic procedures. Not for resale without express authorization.