

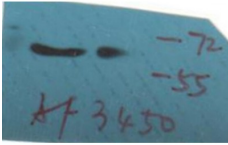
## Phospho-Smad2 (Ser250) Ab

Cat.#: AF3450  
Size: 100ul,200ul

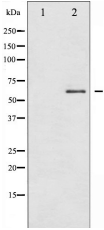
Concn.: 1mg/ml  
Source: Rabbit

Mol.Wt.: 65kDa  
Clonality: Polyclonal

Application:	WB 1:500-1:2000, IF/ICC 1:100-1:500
Reactivity:	Human,Mouse,Rat
Purification:	The Ab is from purified rabbit serum by affinity purification via sequential chromatography on phospho- and non-phospho-peptide affinity columns.
Specificity:	Phospho-Smad2 (Ser250) Ab detects endogenous levels of Smad2 only when phosphorylated at Serine 250.
Immunogen:	A synthesized peptide derived from human Smad2 around the phosphorylation site of Serine 250.
Uniprot:	Q15796
Description:	The protein encoded by this gene belongs to the SMAD, a family of proteins similar to the gene products of the <i>Drosophila</i> gene 'mothers against decapentaplegic' (Mad) and the <i>C. elegans</i> gene Sma. SMAD proteins are signal transducers and transcriptional modulators that mediate multiple signaling pathways. This protein mediates the signal of the transforming growth factor (TGF)-beta, and thus regulates multiple cellular processes, such as cell proliferation, apoptosis, and differentiation.
Subcellular Location:	Cytoplasm. Nucleus. Cytoplasmic and nuclear in the absence of TGF-beta. On TGF-beta stimulation, migrates to the nucleus when complexed with SMAD4. On dephosphorylation by phosphatase PPM1A, released from the SMAD2/SMAD4 complex, and exported out of the nucleus by interaction with RANBP1.
Tissue Specificity:	Expressed at high levels in skeletal muscle, endothelial cells, heart and placenta.
Similarity:	Belongs to the dwarfin/SMAD family.
Storage Condition and Buffer:	Rabbit IgG in phosphate buffered saline , pH 7.4, 150mM NaCl, 0.02% sodium azide and 50% glycerol.Store at -20 °C.Stable for 12 months from date of receipt.



Western blot analysis of Phospho-Smad2 (Ser250) Ab expression in PMA treated 293 cells lysates. The lane on the right is treated with the antigen-specific peptide.



Western blot analysis of Smad2 phosphorylation expression in PMA treated 293 whole cell lysates, The lane on the left is treated with the antigen-specific peptide.



AF3450 staining HepG2 by IF/ICC. The sample were fixed with PFA and permeabilized in 0.1% Triton X-100, then blocked in 10% serum for 45 minutes at 25°C. The primary Ab was diluted at 1/200 and incubated with the sample for 1 hour at 37°C. An Alexa Fluor 594 conjugated goat anti-rabbit IgG (H+L) Ab, diluted at 1/600, was used as the secondary Ab.

**IMPORTANT:** For western blot, incubate membrane with diluted primary Ab in 5% w/v milk, 1X TBS, 0.1% Tween@20 at 4°C with gentle shaking, overnight.

For Research Use Only. Not for use in diagnostic and therapeutic procedures. Not for resale without express authorization.