

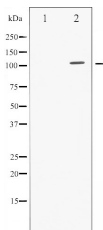
## Phospho-GAB1 (Tyr627) Ab

Cat.#: AF3429  
Size: 100ul,200ul

Concn.: 1mg/ml  
Source: Rabbit

Mol.Wt.: 110kDa  
Clonality: Polyclonal

Application:	WB 1:500-1:2000, IF/ICC 1:100-1:500
Reactivity:	Human,Mouse
Purification:	The Ab is from purified rabbit serum by affinity purification via sequential chromatography on phospho- and non-phospho-peptide affinity columns.
Specificity:	Phospho-GAB1 (Tyr627) Ab detects endogenous levels of GAB1 only when phosphorylated at Tyrosine 627.
Immunogen:	A synthesized peptide derived from human GAB1 around the phosphorylation site of Tyrosine 627.
Uniprot:	Q13480
Description:	Grb2-associated binding protein 1 is a member of the IRS-1-like multisubstrate docking protein family. Contains an N-terminal pleckstrin homology (PH) domain and several proline-rich SH3 domain-binding sequences.
Similarity:	Belongs to the GAB family.
Storage Condition and Buffer:	Rabbit IgG in phosphate buffered saline , pH 7.4, 150mM NaCl, 0.02% sodium azide and 50% glycerol.Store at -20 °C.Stable for 12 months from date of receipt.



Western blot analysis of GAB1 phosphorylation expression in EGF treated HuvEc whole cell lysates,The lane on the left is treated with the antigen-specific peptide.



AF3429 staining NIH-3T3 by IF/ICC. The sample were fixed with PFA and permeabilized in 0.1% Triton X-100,then blocked in 10% serum for 45 minutes at 25°C. The primary Ab was diluted at 1/200 and incubated with the sample for 1 hour at 37°C. An Alexa Fluor 594 conjugated goat anti-rabbit IgG (H+L) Ab, diluted at 1/600, was used as the secondary Ab.

**IMPORTANT:** For western blot, incubate membrane with diluted primary Ab in 5% w/v milk , 1X TBS, 0.1% Tween@20 at 4°C with gentle shaking, overnight.

For Research Use Only. Not for use in diagnostic and therapeutic procedures. Not for resale without express authorization.