

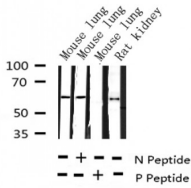
Phospho-G3BP-1 (Ser232) Ab

Cat.#: AF3427
Size: 100ul,200ul

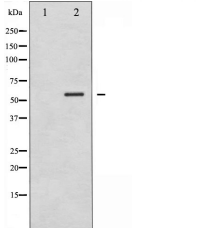
Concn.: 1mg/ml
Source: Rabbit

Mol.Wt.: 60kDa
Clonality: Polyclonal

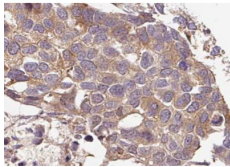
Application:	WB 1:500-1:2000 IHC 1:50-1:200
Reactivity:	Human,Mouse
Purification:	The Ab is from purified rabbit serum by affinity purification via sequential chromatography on phospho- and non-phospho-peptide affinity columns.
Specificity:	Phospho-G3BP-1 (Ser232) Ab detects endogenous levels of G3BP-1 only when phosphorylated at Serine 232.
Immunogen:	A synthesized peptide derived from human G3BP-1 around the phosphorylation site of Serine 232.
Uniprot:	Q13283
Description:	G3BP-1 an hnRNA-binding protein and endoribonuclease that participates in the Ras signal transduction pathway. A regulated effector of stress granule (SG) assembly. SGs are involved in mRNA sorting in the storing of untranslated mRNAs.
Subcellular Location:	Cytoplasm. Cytoplasm > cytosol. Cell membrane. Nucleus. Cytoplasmic in proliferating cells, can be recruited to the plasma membrane in exponentially growing cells (By similarity). Cytosolic and partially nuclear in resting cells. Recruited to stress granules (SGs) upon either arsenite or high temperature treatment. Recruitment to SGs is influenced by HRAS.
Tissue Specificity:	Ubiquitous.
Similarity:	The NTF2 domain mediates multimerization.
Storage Condition and Buffer:	Rabbit IgG in phosphate buffered saline , pH 7.4, 150mM NaCl, 0.02% sodium azide and 50% glycerol.Store at -20 °C.Stable for 12 months from date of receipt.



Western blot analysis of Phospho-G3BP-1 (Ser232) expression in various lysates



Western blot analysis of G3BP-1 phosphorylation expression in 293 whole cell lysates. The lane on the left is treated with the antigen-specific peptide.



AF3427 at 1/100 staining human breast carcinoma tissue sections by IHC-P. The tissue was formaldehyde fixed and a heat mediated antigen retrieval step in citrate buffer was performed. The tissue was then blocked and incubated with the Ab for 1.5 hours at 22°C. An HRP conjugated goat anti-rabbit Ab was used as the secondary.

IMPORTANT: For western blot, incubate membrane with diluted primary Ab in 5% w/v milk, 1X TBS, 0.1% Tween@20 at 4°C with gentle shaking, overnight.

For Research Use Only. Not for use in diagnostic and therapeutic procedures. Not for resale without express authorization.