

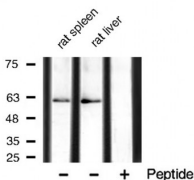
Phospho-AMPK1 (Ser485/Ser491) Ab

Cat.#: AF3422
Size: 100ul,200ul

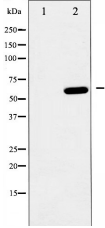
Concn.: 1mg/ml
Source: Rabbit

Mol.Wt.: 62kDa
Clonality: Polyclonal

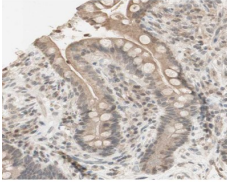
| | |
|-------------------------------|--|
| Application: | WB 1:500-1:2000 IHC 1:50-1:200, IF/ICC 1:100-1:500 |
| Reactivity: | Human,Mouse,Rat |
| Purification: | The Ab is from purified rabbit serum by affinity purification via sequential chromatography on phospho- and non-phospho-peptide affinity columns. |
| Specificity: | Phospho-AMPK1 (Ser485) Ab detects endogenous levels of AMPK1 only when phosphorylated at Serine 485. |
| Immunogen: | A synthesized peptide derived from human AMPK1 around the phosphorylation site of Serine 485. |
| Uniprot: | Q13131 |
| Description: | AMPKA1 a protein kinase of the CAMKL family that plays a central role in regulating cellular and organismal energy balance in response to the balance between AMP/ATP, and intracellular Ca(2+) levels. |
| Subcellular Location: | Nucleus; |
| Similarity: | The AIS (autoinhibitory sequence) region shows some sequence similarity with the ubiquitin-associated domains and represses kinase activity.Belongs to the protein kinase superfamily. CAMK Ser/Thr protein kinase family. SNF1 subfamily. |
| Storage Condition and Buffer: | Rabbit IgG in phosphate buffered saline , pH 7.4, 150mM NaCl, 0.02% sodium azide and 50% glycerol.Store at -20 °C.Stable for 12 months from date of receipt. |



Western blot analysis of extracts of various tissue,using Phospho-AMPK1 (Ser485) Ab.



Western blot analysis of AMPK1 phosphorylation expression in heatshock treated HeLa whole cell lysates, The lane on the left is treated with the antigen-specific peptide.



AF3422 at 1/200 staining human colon cancer tissue sections by IHC-P. The tissue was formaldehyde fixed and a heat mediated antigen retrieval step in citrate buffer was performed. The tissue was then blocked and incubated with the Ab for 1.5 hours at 22°C. An HRP conjugated goat anti-rabbit Ab was used as the secondary.



AF3422 staining HT29 by IF/ICC. The sample were fixed with PFA and permeabilized in 0.1% Triton X-100, then blocked in 10% serum for 45 minutes at 25°C. The primary Ab was diluted at 1/200 and incubated with the sample for 1 hour at 37°C. An Alexa Fluor 594 conjugated goat anti-rabbit IgG (H+L) Ab, diluted at 1/600, was used as the secondary Ab.

IMPORTANT: For western blot, incubate membrane with diluted primary Ab in 5% w/v milk, 1X TBS, 0.1% Tween@20 at 4°C with gentle shaking, overnight.

For Research Use Only. Not for use in diagnostic and therapeutic procedures. Not for resale without express authorization.