

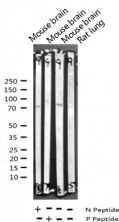
## Phospho-FOXO1/3/4-pan (Thr24/32) Ab

Cat.#: AF3419  
Size: 100ul,200ul

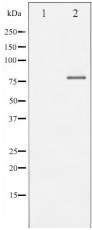
Concn.: 1mg/ml  
Source: Rabbit

Mol.Wt.: 78kDa  
Clonality: Polyclonal

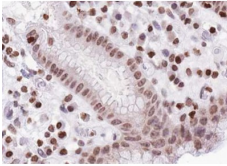
|                               |  |
|-------------------------------|--|
| Application:                  | WB 1:500-1:2000 IHC 1:50-1:200   |
| Reactivity:                   | Human,Mouse,Rat  |
| Purification:                 | The Ab is from purified rabbit serum by affinity purification via sequential chromatography on phospho- and non-phospho-peptide affinity columns.  |
| Specificity:                  | Phospho-FOXO1/3/4-pan (Thr24/32) Ab detects endogenous levels of FOXO1/3/4-pan only when phosphorylated at Threonine 24/32.  |
| Immunogen:                    | A synthesized peptide derived from human FOXO1/3/4-pan around the phosphorylation site of Threonine 24/32.   |
| Uniprot:                      | Q12778/P98177  |
| Description:                  | FOXO4 transcription factor AFX1 containing 1 fork-head domain. May play a role in the insulin signaling pathway. Involved in acute leukemias by a chromosomal translocation t(X;11)(q13;q23) that involves MLLT7 and MLL/HRX. The result is a rogue activator protein. |
| Subcellular Location:         | Cytoplasm. Nucleus. Shuttles between cytoplasm and nucleus.  |
| Tissue Specificity:           | Ubiquitous.  |
| Storage Condition and Buffer: | Rabbit IgG in phosphate buffered saline , pH 7.4, 150mM NaCl, 0.02% sodium azide and 50% glycerol.Store at -20 °C.Stable for 12 months from date of receipt.   |



Western blot analysis of Phospho-FOXO1/3/4-pan (Thr24/32) expression in various lysates



Western blot analysis of FOXO1/3/4-pan phosphorylation expression in Serum treated 293 whole cell lysates, The lane on the left is treated with the antigen-specific peptide.



AF3419 at 1/100 staining human Stomach carcinoma tissue sections by IHC-P. The tissue was formaldehyde fixed and a heat mediated antigen retrieval step in citrate buffer was performed. The tissue was then blocked and incubated with the Ab for 1.5 hours at 22°C. An HRP conjugated goat anti-rabbit Ab was used as the secondary.

**IMPORTANT:** For western blot, incubate membrane with diluted primary Ab in 5% w/v milk , 1X TBS, 0.1% Tween@20 at 4°C with gentle shaking, overnight.

For Research Use Only. Not for use in diagnostic and therapeutic procedures. Not for resale without express authorization.