

---

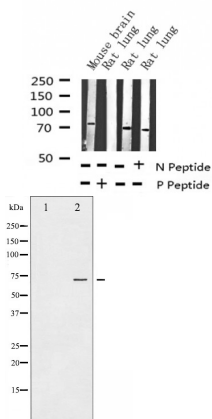
## Phospho-SHP-2 (Tyr542) Ab

Cat.#: AF3412  
Size: 100ul,200ul

Concn.: 1mg/ml  
Source: Rabbit

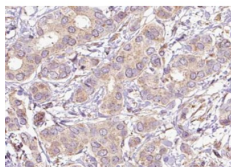
Mol.Wt.: 70kDa  
Clonality: Polyclonal

|                               |                                                                                                                                                                                                                                                                                                       |
|-------------------------------|-------------------------------------------------------------------------------------------------------------------------------------------------------------------------------------------------------------------------------------------------------------------------------------------------------|
| Application:                  | WB 1:500-1:2000 IHC 1:50-1:200, IF/ICC 1:100-1:500                                                                                                                                                                                                                                                    |
| Reactivity:                   | Human,Mouse,Rat                                                                                                                                                                                                                                                                                       |
| Purification:                 | The Ab is from purified rabbit serum by affinity purification via sequential chromatography on phospho- and non-phospho-peptide affinity columns.                                                                                                                                                     |
| Specificity:                  | Phospho-SHP-2 (Tyr542) Ab detects endogenous levels of SHP-2 only when phosphorylated at Tyrosine 542.                                                                                                                                                                                                |
| Immunogen:                    | A synthesized peptide derived from human SHP-2 around the phosphorylation site of Tyrosine 542.                                                                                                                                                                                                       |
| Uniprot:                      | Q06124                                                                                                                                                                                                                                                                                                |
| Description:                  | SHP-2 a SH2-containing a ubiquitously expressed tyrosine-specific protein phosphatase. It participates in signaling events downstream of receptors for growth factors, cytokines, hormones, antigens and extracellular matrices in the control of cell growth, differentiation, migration, and death. |
| Subcellular Location:         | Cytoplasm.                                                                                                                                                                                                                                                                                            |
| Tissue Specificity:           | Widely expressed, with highest levels in heart, brain, and skeletal muscle.                                                                                                                                                                                                                           |
| Similarity:                   | The SH2 domains repress phosphatase activity. Binding of these domains to phosphotyrosine-containing proteins relieves this auto-inhibition, possibly by inducing a conformational change in the enzyme.Belongs to the protein-tyrosine phosphatase family. Non-receptor class 2 subfamily.           |
| Storage Condition and Buffer: | Rabbit IgG in phosphate buffered saline , pH 7.4, 150mM NaCl, 0.02% sodium azide and 50% glycerol.Store at -20 °C.Stable for 12 months from date of receipt.                                                                                                                                          |



Western blot analysis of Phospho-SHP-2 (Tyr542) expression in various lysates

Western blot analysis of SHP-2 phosphorylation expression in A431 whole cell lysates. The lane on the left is treated with the antigen-specific peptide.



AF3412 at 1/100 staining human Breast carcinoma tissue sections by IHC-P. The tissue was formaldehyde fixed and a heat mediated antigen retrieval step in citrate buffer was performed. The tissue was then blocked and incubated with the Ab for 1.5 hours at 22°C. An HRP conjugated goat anti-rabbit Ab was used as the secondary.



AF3412 staining A431 by IF/ICC. The sample were fixed with PFA and permeabilized in 0.1% Triton X-100, then blocked in 10% serum for 45 minutes at 25°C. The primary Ab was diluted at 1/200 and incubated with the sample for 1 hour at 37°C. An Alexa Fluor 594 conjugated goat anti-rabbit IgG (H+L) Ab, diluted at 1/600, was used as the secondary Ab.

**IMPORTANT:** For western blot, incubate membrane with diluted primary Ab in 5% w/v milk, 1X TBS, 0.1% Tween@20 at 4°C with gentle shaking, overnight.

For Research Use Only. Not for use in diagnostic and therapeutic procedures. Not for resale without express authorization.