

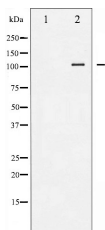
Phospho-HSL (Ser552) Ab

Cat.#: AF3403
Size: 100ul,200ul

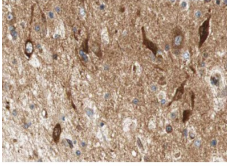
Concn.: 1mg/ml
Source: Rabbit

Mol.Wt.: 117kDa
Clonality: Polyclonal

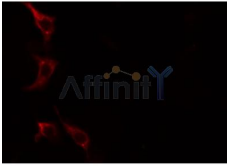
Application:	WB 1:500-1:2000 IHC 1:50-1:200, IF/ICC 1:100-1:500
Reactivity:	Human,Mouse,Rat
Purification:	The Ab is from purified rabbit serum by affinity purification via sequential chromatography on phospho- and non-phospho-peptide affinity columns.
Specificity:	Phospho-HSL (Ser552) Ab detects endogenous levels of HSL only when phosphorylated at Serine 552.
Immunogen:	A synthesized peptide derived from human HSL around the phosphorylation site of Serine 552.
Uniprot:	Q05469
Description:	hormone sensitive lipase is a lipolytic enzyme of the 'GDXG' family. Plays a rate limiting step in triglyceride lipolysis. In adipose tissue and heart, it primarily hydrolyzes stored triglycerides to free fatty acids, while in steroidogenic tissues, it principally converts cholesterol esters to free cholesterol for steroid hormone production.
Subcellular Location:	Cell membrane. Membrane > caveola. Cytoplasm > cytosol. Found in the high-density caveolae. Translocates to the cytoplasm from the caveolae upon insulin stimulation.
Similarity:	Belongs to the 'GDXG' lipolytic enzyme family.
Storage Condition and Buffer:	Rabbit IgG in phosphate buffered saline , pH 7.4, 150mM NaCl, 0.02% sodium azide and 50% glycerol.Store at -20 °C.Stable for 12 months from date of receipt.



Western blot analysis of HSL phosphorylation expression in K562 whole cell lysates, The lane on the left is treated with the antigen-specific peptide.



AF3403 at 1/100 staining human brain tissue sections by IHC-P. The tissue was formaldehyde fixed and a heat mediated antigen retrieval step in citrate buffer was performed. The tissue was then blocked and incubated with the Ab for 1.5 hours at 22°C. An HRP conjugated goat anti-rabbit Ab was used as the secondary.



AF3403 staining HeLa cells by IF/ICC. The sample were fixed with PFA and permeabilized in 0.1% Triton X-100, then blocked in 10% serum for 45 minutes at 25°C. The primary Ab was diluted at 1/200 and incubated with the sample for 1 hour at 37°C. An Alexa Fluor 594 conjugated goat anti-rabbit IgG (H+L) Ab(Cat.# S0006), diluted at 1/600, was used as secondary Ab.

IMPORTANT: For western blot, incubate membrane with diluted primary Ab in 5% w/v milk , 1X TBS, 0.1% Tween@20 at 4°C with gentle shaking, overnight.

For Research Use Only. Not for use in diagnostic and therapeutic procedures. Not for resale without express authorization.