

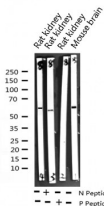
Phospho-MEF2A (Thr312) Ab

Cat.#: AF3381
 Size: 100ul,200ul

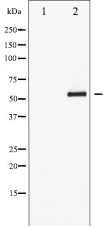
Concn.: 1mg/ml
 Source: Rabbit

Mol.Wt.: 55kDa
 Clonality: Polyclonal

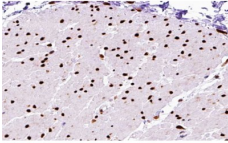
- Application:** WB 1:500-1:2000 IHC 1:50-1:200 IP, IF/ICC 1:100-1:500
- Reactivity:** Human,Mouse,Rat
- Purification:** The Ab is from purified rabbit serum by affinity purification via sequential chromatography on phospho- and non-phospho-peptide affinity columns.
- Specificity:** Phospho-MEF2A (Thr312) Ab detects endogenous levels of MEF2A only when phosphorylated at Threonine 312.
- Immunogen:** A synthesized peptide derived from human MEF2A around the phosphorylation site of Threonine 312.
- Uniprot:** Q02078
- Description:** MEF2A a myocyte-specific enhancing transcription factor which binds specifically to the MEF2 element present in the regulatory regions of many, if not all, muscle-specific genes. A member of the MADS gene family that also includes several homeotic genes and other transcription factors, all of which share a conserved DNA-binding domain.
- Subcellular Location:** MEF2A: Nucleus. MEF2C: Nucleus.
- Tissue Specificity:** Isoform MEF2 and isoform MEFA are expressed only in skeletal and cardiac muscle and in the brain. Isoform RSRFC4 and isoform RSRFC9 are expressed in all tissues examined.
- Similarity:** Belongs to the MEF2 family.
- Storage Condition and Buffer:** Rabbit IgG in phosphate buffered saline , pH 7.4, 150mM NaCl, 0.02% sodium azide and 50% glycerol.Store at -20 °C.Stable for 12 months from date of receipt.



Western blot analysis of Phospho-MEF2A (Thr312) expression in various lysates



Western blot analysis of MEF2A phosphorylation expression in PMA treated NIH-3T3 whole cell lysates, The lane on the left is treated with the antigen-specific peptide.



AF3381 at 1/200 staining human Smooth muscle tissue sections by IHC-P. The tissue was formaldehyde fixed and a heat mediated antigen retrieval step in citrate buffer was performed. The tissue was then blocked and incubated with the Ab for 1.5 hours at 22°C. An HRP conjugated goat anti-rabbit Ab was used as the secondary.



AF3381 staining HeLa by IF/ICC. The sample were fixed with PFA and permeabilized in 0.1% Triton X-100, then blocked in 10% serum for 45 minutes at 25°C. The primary Ab was diluted at 1/200 and incubated with the sample for 1 hour at 37°C. An Alexa Fluor 594 conjugated goat anti-rabbit IgG (H+L) Ab, diluted at 1/600, was used as the secondary Ab.

IMPORTANT: For western blot, incubate membrane with diluted primary Ab in 5% w/v milk, 1X TBS, 0.1% Tween@20 at 4°C with gentle shaking, overnight.

For Research Use Only. Not for use in diagnostic and therapeutic procedures. Not for resale without express authorization.