

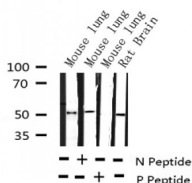
## Phospho-AML1 (Ser303) Ab

Cat.#: AF3379  
Size: 100ul, 200ul

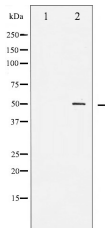
Concn.: 1mg/ml  
Source: Rabbit

Mol.Wt.: 50kDa  
Clonality: Polyclonal

Application:	WB 1:500-1:2000 IHC 1:50-1:200, IF/ICC 1:100-1:500
Reactivity:	Human, Mouse, Rat
Purification:	The Ab is from purified rabbit serum by affinity purification via sequential chromatography on phospho- and non-phospho-peptide affinity columns.
Specificity:	Phospho-AML1 (Ser303) Ab detects endogenous levels of AML1 only when phosphorylated at Serine 303.
Immunogen:	A synthesized peptide derived from human AML1 around the phosphorylation site of Serine 303.
Uniprot:	Q01196
Description:	Core binding factor (CBF) is a heterodimeric transcription factor that binds to the core element of many enhancers and promoters.
Subcellular Location:	Nucleus.
Tissue Specificity:	Expressed in all tissues examined except brain and heart. Highest levels in thymus, bone marrow and peripheral blood.
Similarity:	A proline/serine/threonine rich region at the C-terminus is necessary for transcriptional activation of target genes.
Storage Condition and Buffer:	Rabbit IgG in phosphate buffered saline , pH 7.4, 150mM NaCl, 0.02% sodium azide and 50% glycerol. Store at -20 °C. Stable for 12 months from date of receipt.



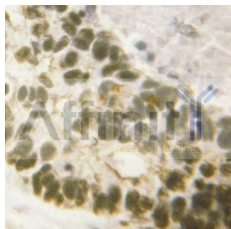
Western blot analysis of Phospho-AML1 (Ser303) expression in various lysates



Western blot analysis of AML1 phosphorylation expression in Jurkat whole cell lysates, The lane on the left is treated with the antigen-specific peptide.



AF3379 at 1/100 staining Rat heart tissue by IHC-P. The sample was formaldehyde fixed and a heat mediated antigen retrieval step in citrate buffer was performed. The sample was then blocked and incubated with the Ab for 1.5 hours at 22°C. An HRP conjugated goat anti-rabbit Ab was used as the secondary.



AF3379 at 1/100 staining human lung tissues sections by IHC-P. The tissue was formaldehyde fixed and a heat mediated antigen retrieval step in citrate buffer was performed. The tissue was then blocked and incubated with the Ab for 1.5 hours at 140°C.



AF3379 staining Hela by IF/ICC. The sample were fixed with PFA and permeabilized in 0.1% Triton X-100, then blocked in 10% serum for 45 minutes at 25°C. The primary Ab was diluted at 1/200 and incubated with the sample for 1 hour at 37°C. An Alexa Fluor 594 conjugated goat anti-rabbit IgG (H+L) Ab, diluted at 1/600, was used as the secondary Ab.

**IMPORTANT:** For western blot, incubate membrane with diluted primary Ab in 5% w/v milk, 1X TBS, 0.1% Tween@20 at 4°C with gentle shaking, overnight.

For Research Use Only. Not for use in diagnostic and therapeutic procedures. Not for resale without express authorization.