

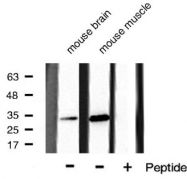
## Phospho-CDK5 (Tyr15) Ab

Cat.#: AF3371  
Size: 100ul,200ul

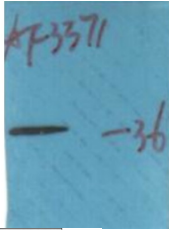
Concn.: 1mg/ml  
Source: Rabbit

Mol.Wt.: 33kDa  
Clonality: Polyclonal

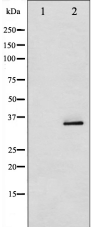
Application:	WB 1:500-1:2000, IF/ICC 1:100-1:500
Reactivity:	Human,Mouse,Rat,Monkey
Purification:	The Ab is from purified rabbit serum by affinity purification via sequential chromatography on phospho- and non-phospho-peptide affinity columns.
Specificity:	Phospho-CDK5 (Tyr15) Ab detects endogenous levels of CDK5 only when phosphorylated at Tyrosine 15.
Immunogen:	A synthesized peptide derived from human CDK5 around the phosphorylation site of Tyrosine 15.
Uniprot:	Q00535
Description:	CDK5 is a protein kinase of the CDK family. Unlike other members of this family, it is not activated by cyclins but by p35 (CDK5R1) and p39. An important regulator of neuronal positioning during brain development. May also play a role in synaptogenesis and neurotransmission.
Subcellular Location:	Cytoplasm. Cell projection > lamellipodium. Cell projection > growth cone. In axonal growth cone with extension to the peripheral lamellipodia.
Tissue Specificity:	Isoform 1 is ubiquitously expressed. Accumulates in cortical neurons (at protein level). Isoform 2 has only been detected in testis, skeletal muscle, colon, bone marrow and ovary.
Similarity:	Belongs to the protein kinase superfamily. CMGC Ser/Thr protein kinase family. CDC2/CDKX subfamily.
Storage Condition and Buffer:	Rabbit IgG in phosphate buffered saline , pH 7.4, 150mM NaCl, 0.02% sodium azide and 50% glycerol.Store at -20 °C.Stable for 12 months from date of receipt.



Western blot analysis of CDK5 phosphorylation expression in mouse brain and mouse muscle cell lysates, The lane on the right is treated with the antigen-specific peptide.



Western blot analysis of Phospho-CDK5 (Tyr15) Ab expression in EGF treated COS7 cells lysates. The lane on the right is treated with the antigen-specific peptide.



Western blot analysis of CDK5 phosphorylation expression in EGF treated COS7 whole cell lysates, The lane on the left is treated with the antigen-specific peptide.



AF3371 staining COS7 by IF/ICC. The sample were fixed with PFA and permeabilized in 0.1% Triton X-100, then blocked in 10% serum for 45 minutes at 25°C. The primary Ab was diluted at 1/200 and incubated with the sample for 1 hour at 37°C. An Alexa Fluor 594 conjugated goat anti-rabbit IgG (H+L) Ab, diluted at 1/600, was used as the secondary Ab.

**IMPORTANT:** For western blot, incubate membrane with diluted primary Ab in 5% w/v milk, 1X TBS, 0.1% Tween@20 at 4°C with gentle shaking, overnight.

For Research Use Only. Not for use in diagnostic and therapeutic procedures. Not for resale without express authorization.