

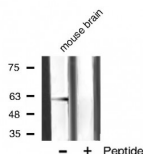
## Phospho-Akt2 (Ser474) Ab

Cat.#: AF3264  
Size: 100ul,200ul

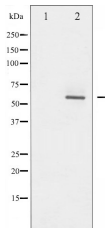
Concn.: 1mg/ml  
Source: Rabbit

Mol.Wt.: 60kDa  
Clonality: Polyclonal

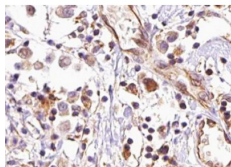
Application:	WB 1:500-1:2000 IHC 1:50-1:200, IF/ICC 1:100-1:500
Reactivity:	Human,Mouse,Rat
Purification:	The Ab is from purified rabbit serum by affinity purification via sequential chromatography on phospho- and non-phospho-peptide affinity columns.
Specificity:	Phospho-Akt2 (Ser474) Ab detects endogenous levels of Akt2 only when phosphorylated at Serine 474.
Immunogen:	A synthesized peptide derived from human Akt2 around the phosphorylation site of Serine 474.
Uniprot:	P31751
Description:	Akt2 an AGC kinase. Plays critical roles in glucose metabolism and the development or maintenance of proper adipose tissue and islet mass for which other Akt/PKB isoforms are unable to fully compensate.
Subcellular Location:	Endosome;Nucleus;Plasma membrane;
Tissue Specificity:	Expressed in all cell types so far analyzed.
Similarity:	Binding of the PH domain to phosphatidylinositol 3,4,5-trisphosphate (PI(3,4,5)P3) following phosphatidylinositol 3-kinase alpha (PIK3CA) activity results in its targeting to the plasma membrane.Belongs to the protein kinase superfamily. AGC Ser/Thr protein kinase family. RAC subfamily.
Storage Condition and Buffer:	Rabbit IgG in phosphate buffered saline , pH 7.4, 150mM NaCl, 0.02% sodium azide and 50% glycerol.Store at -20 °C.Stable for 12 months from date of receipt.



Western blot analysis of akt2 phosphorylation expression in mouse brain tissue lysates, The lane on the right is treated with the antigen-specific peptide.



Western blot analysis of Akt2 phosphorylation expression in TNF- $\alpha$  treated A2780 whole cell lysates, The lane on the left is treated with the antigen-specific peptide.



AF3264 at 1/100 staining human breast carcinoma tissue sections by IHC-P. The tissue was formaldehyde fixed and a heat mediated antigen retrieval step in citrate buffer was performed. The tissue was then blocked and incubated with the Ab for 1.5 hours at 22°C. An HRP conjugated goat anti-rabbit Ab was used as the secondary.



AF3264 staining A2780 by IF/ICC. The sample were fixed with PFA and permeabilized in 0.1% Triton X-100, then blocked in 10% serum for 45 minutes at 25°C. The primary Ab was diluted at 1/200 and incubated with the sample for 1 hour at 37°C. An Alexa Fluor 594 conjugated goat anti-rabbit IgG (H+L) Ab, diluted at 1/600, was used as the secondary Ab.

**IMPORTANT:** For western blot, incubate membrane with diluted primary Ab in 5% w/v milk, 1X TBS, 0.1% Tween@20 at 4°C with gentle shaking, overnight.

For Research Use Only. Not for use in diagnostic and therapeutic procedures. Not for resale without express authorization.