

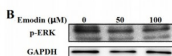
## Phospho-ERK1/2 (Thr202) Ab

Cat.#: AF3240  
Size: 100ul,200ul

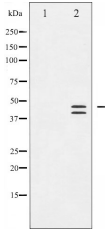
Concn.: 1mg/ml  
Source: Rabbit

Mol.Wt.: 44+42kDa  
Clonality: Polyclonal

|                               |                                                                                                                                                                                                                                       |
|-------------------------------|---------------------------------------------------------------------------------------------------------------------------------------------------------------------------------------------------------------------------------------|
| Application:                  | WB 1:500-1:2000                                                                                                                                                                                                                       |
| Reactivity:                   | Human,Mouse,Rat                                                                                                                                                                                                                       |
| Purification:                 | The Ab is from purified rabbit serum by affinity purification via sequential chromatography on phospho- and non-phospho-peptide affinity columns.                                                                                     |
| Specificity:                  | Phospho-p44/42 MAP Kinase (Thr202) Ab detects endogenous levels of p44/42 MAP Kinase only when phosphorylated at Threonine 202.                                                                                                       |
| Immunogen:                    | A synthesized peptide derived from human p44/42 MAP Kinase around the phosphorylation site of Threonine 202.                                                                                                                          |
| Uniprot:                      | P27361/P28482                                                                                                                                                                                                                         |
| Description:                  | p42 MAP kinase plays a critical role in the regulation of cell growth and differentiation. Activated by a wide variety of extracellular signals including growth and neurotrophic factors, cytokines, hormones and neurotransmitters. |
| Subcellular Location:         | Nucleus.                                                                                                                                                                                                                              |
| Similarity:                   | The TXY motif contains the threonine and tyrosine residues whose phosphorylation activates the MAP kinases.Belongs to the protein kinase superfamily. CMGC Ser/Thr protein kinase family. MAP kinase subfamily.                       |
| Storage Condition and Buffer: | Rabbit IgG in phosphate buffered saline , pH 7.4, 150mM NaCl, 0.02% sodium azide and 50% glycerol.Store at -20 °C.Stable for 12 months from date of receipt.                                                                          |



Emodin targets mitochondrial cyclophilin D to induce apoptosis in HepG2 cells Ling Zhang, Dian He, Kun Li, Hongli Liu, Baitao Wang, Lifang Zheng\*, Jiazhong Li



Western blot analysis of p44/42 MAP Kinase phosphorylation expression in EGF treated A431 whole cell lysates, The lane on the left is treated with the antigen-specific peptide.

**IMPORTANT:** For western blot, incubate membrane with diluted primary Ab in 5% w/v milk , 1X TBS, 0.1% Tween@20 at 4°C with gentle shaking, overnight.

For Research Use Only. Not for use in diagnostic and therapeutic procedures. Not for resale without express authorization.