

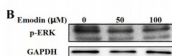
Phospho-ERK1/2 (Thr202) Ab

Cat.#: AF3240
Size: 100ul,200ul

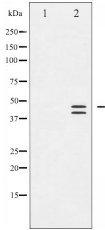
Concn.: 1mg/ml
Source: Rabbit

Mol.Wt.: 44+42kDa
Clonality: Polyclonal

Application:	WB 1:500-1:2000
Reactivity:	Human,Mouse,Rat
Purification:	The Ab is from purified rabbit serum by affinity purification via sequential chromatography on phospho- and non-phospho-peptide affinity columns.
Specificity:	Phospho-p44/42 MAP Kinase (Thr202) Ab detects endogenous levels of p44/42 MAP Kinase only when phosphorylated at Threonine 202.
Immunogen:	A synthesized peptide derived from human p44/42 MAP Kinase around the phosphorylation site of Threonine 202.
Uniprot:	P27361/P28482
Description:	p42 MAP kinase plays a critical role in the regulation of cell growth and differentiation. Activated by a wide variety of extracellular signals including growth and neurotrophic factors, cytokines, hormones and neurotransmitters.
Subcellular Location:	Nucleus.
Similarity:	The TXY motif contains the threonine and tyrosine residues whose phosphorylation activates the MAP kinases. Belongs to the protein kinase superfamily. CMGC Ser/Thr protein kinase family. MAP kinase subfamily.
Storage Condition and Buffer:	Rabbit IgG in phosphate buffered saline , pH 7.4, 150mM NaCl, 0.02% sodium azide and 50% glycerol. Store at -20 °C. Stable for 12 months from date of receipt.



Emodin targets mitochondrial cyclophilin D to induce apoptosis in HepG2 cells Ling Zhang, Dian He, Kun Li, Hongli Liu, Baitao Wang, Lifang Zheng*, Jiazhong Li



Western blot analysis of p44/42 MAP Kinase phosphorylation expression in EGF treated A431 whole cell lysates, The lane on the left is treated with the antigen-specific peptide.

IMPORTANT: For western blot, incubate membrane with diluted primary Ab in 5% w/v milk , 1X TBS, 0.1% Tween@20 at 4°C with gentle shaking, overnight.

For Research Use Only. Not for use in diagnostic and therapeutic procedures. Not for resale without express authorization.