

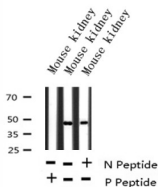
Phospho-IL-8R beta/CDw128 beta (Ser347) Ab

Cat.#: AF3238
 Size: 100ul,200ul

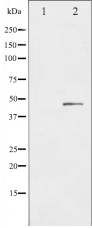
Concn.: 1mg/ml
 Source: Rabbit

Mol.Wt.: 48kDa
 Clonality: Polyclonal

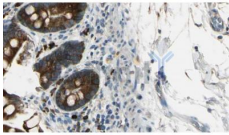
- Application:** WB 1:500-1:2000 IHC 1:50-1:200 IF/ICC 1:100-1:500
- Reactivity:** Human,Mouse
- Purification:** The Ab is from purified rabbit serum by affinity purification via sequential chromatography on phospho- and non-phospho-peptide affinity columns.
- Specificity:** Phospho-IL-8R beta/CDw128 beta (Ser347) Ab detects endogenous levels of IL-8R beta/CDw128 beta only when phosphorylated at Serine 347.
- Immunogen:** A synthesized peptide derived from human IL-8R beta/CDw128 beta around the phosphorylation site of Serine 347.
- Uniprot:** P25025
- Description:** IL-8R B Receptor for interleukin-8 which is a powerful neutrophil chemotactic factor. Binding of IL-8 to the receptor causes activation of neutrophils. This response is mediated via a G-protein that activates a phosphatidylinositol-calcium second messenger system.
- Subcellular Location:** Cell membrane.
- Similarity:** Belongs to the G-protein coupled receptor 1 family.
- Storage Condition and Buffer:** Rabbit IgG in phosphate buffered saline , pH 7.4, 150mM NaCl, 0.02% sodium azide and 50% glycerol.Store at -20 °C.Stable for 12 months from date of receipt.



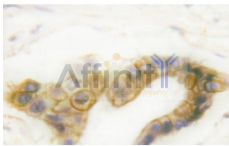
Western blot analysis of Phospho-IL-8R beta/CDw128 beta (Ser347) expression in Mouse kidney lysate



Western blot analysis of IL-8R beta/CDw128 beta phosphorylation expression in PMA treated NIH-3T3 whole cell lysates. The lane on the left is treated with the antigen-specific peptide.



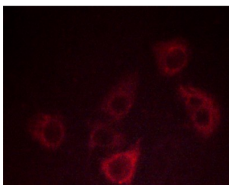
AF3238 at 1/100 staining Mouse intestine tissue by IHC-P. The sample was formaldehyde fixed and a heat mediated antigen retrieval step in citrate buffer was performed. The sample was then blocked and incubated with the Ab for 1.5 hours at 22°C. An HRP conjugated goat anti-rabbit Ab was used as the secondary.



AF3238 at 1/100 staining human breast carcinoma tissues sections by IHC-P. The tissue was formaldehyde fixed and a heat mediated antigen retrieval step in citrate buffer was performed. The tissue was then blocked and incubated with the Ab for 1.5 ho



AF3238 staining NIH-3T3 by IF/ICC. The sample were fixed with PFA and permeabilized in 0.1% Triton X-100, then blocked in 10% serum for 45 minutes at 25°C. The primary Ab was diluted at 1/200 and incubated with the sample for 1 hour at 37°C. An Alexa Fluor 594 conjugated goat anti-rabbit IgG (H+L) Ab, diluted at 1/600, was used as the secondary Ab.



AF3238 staining COS7 cells by ICC/IF. Cells were fixed with PFA and permeabilized in 0.1% saponin prior to blocking in 10% serum for 45 minutes at 37°C. The primary Ab was diluted 1/400 and incubated with the sample for 1 hour at 37°C. A Alexa Fluor 594 conjugated goat polyclonal to rabbit IgG (H+L), diluted 1/600 was used as secondary Ab.

IMPORTANT: For western blot, incubate membrane with diluted primary Ab in 5% w/v milk, 1X TBS, 0.1% Tween@20 at 4°C with gentle shaking, overnight.

For Research Use Only. Not for use in diagnostic and therapeutic procedures. Not for resale without express authorization.