

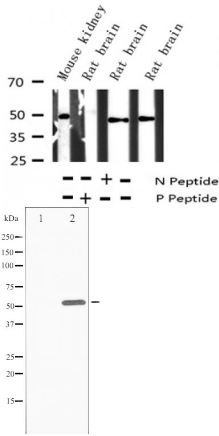
Phospho-ATF2 (Thr73/55) Ab

Cat.#: AF3180
Size: 100ul,200ul

Concn.: 1mg/ml
Source: Rabbit

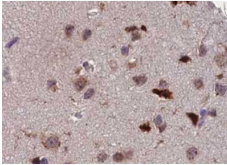
Mol.Wt.: 52kDa
Clonality: Polyclonal

| | |
|-------------------------------|------------------------------------------------------------------------------------------------------------------------------------------------------------------------------------------------------------------------------------------------------------------------------------------------------------------------------------------------------------------------------------------------------------------------|
| Application: | WB 1:500-1:2000 IHC 1:50-1:200 IP, IF/ICC 1:100-1:500 |
| Reactivity: | Human,Mouse,Rat |
| Purification: | The Ab is from purified rabbit serum by affinity purification via sequential chromatography on phospho- and non-phospho-peptide affinity columns. |
| Specificity: | Phospho-ATF2 (Thr73 or 55) Ab detects endogenous levels of ATF2 only when phosphorylated at Threonine 73 or 55. |
| Immunogen: | A synthesized peptide derived from human ATF2 around the phosphorylation site of Threonine 73 or 55. |
| Uniprot: | P15336 |
| Description: | This gene encodes a transcription factor that is a member of the leucine zipper family of DNA binding proteins. This protein binds to the cAMP-responsive element (CRE), an octameric palindrome. The protein forms a homodimer or heterodimer with c-Jun and stimulates CRE-dependent transcription. The protein is also a histone acetyltransferase (HAT) that specifically acetylates histones H2B and H4 in vitro; |
| Subcellular Location: | Nucleus. |
| Tissue Specificity: | Ubiquitously expressed, with more abundant expression in the brain. |
| Similarity: | The nuclear export signal 1 (N-NES) negatively regulates its nuclear localization and transcriptional activity.Belongs to the bZIP family. ATF subfamily. |
| Storage Condition and Buffer: | Rabbit IgG in phosphate buffered saline , pH 7.4, 150mM NaCl, 0.02% sodium azide and 50% glycerol.Store at -20 °C.Stable for 12 months from date of receipt. |



Western blot analysis of Phospho-ATF2 (Thr73 or 55) expression in various lysates

Western blot analysis of ATF2 phosphorylation expression in 293 whole cell lysates. The lane on the left is treated with the antigen-specific peptide.



AF3180 at 1/100 staining human brain tissue sections by IHC-P. The tissue was formaldehyde fixed and a heat mediated antigen retrieval step in citrate buffer was performed. The tissue was then blocked and incubated with the Ab for 1.5 hours at 22°C. An HRP conjugated goat anti-rabbit Ab was used as the secondary.



AF3180 staining HeLa by IF/ICC. The sample were fixed with PFA and permeabilized in 0.1% Triton X-100, then blocked in 10% serum for 45 minutes at 25°C. The primary Ab was diluted at 1/200 and incubated with the sample for 1 hour at 37°C. An Alexa Fluor 594 conjugated goat anti-rabbit IgG (H+L) Ab, diluted at 1/600, was used as the secondary.

IMPORTANT: For western blot, incubate membrane with diluted primary Ab in 5% w/v milk, 1X TBS, 0.1% Tween@20 at 4°C with gentle shaking, overnight.

For Research Use Only. Not for use in diagnostic and therapeutic procedures. Not for resale without express authorization.