

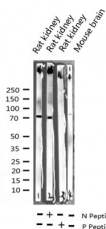
Phospho-C-RAF (Ser259) Ab

Cat.#: AF3064
Size: 100ul,200ul

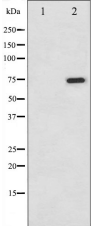
Concn.: 1mg/ml
Source: Rabbit

Mol.Wt.: 74kDa
Clonality: Polyclonal

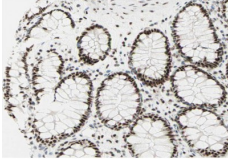
Application:	WB 1:500-1:2000 IHC 1:50-1:200, IF/ICC 1:100-1:500
Reactivity:	Human, Mouse, Rat
Purification:	The Ab is from purified rabbit serum by affinity purification via sequential chromatography on phospho- and non-phospho-peptide affinity columns.
Specificity:	Phospho-C-RAF (Ser259) Ab detects endogenous levels of C-RAF only when phosphorylated at Serine 259.
Immunogen:	A synthesized peptide derived from human C-RAF around the phosphorylation site of Serine 259.
Uniprot:	P04049
Description:	Raf-1 is a MAP kinase kinase kinase (MAP3K) which functions downstream of the Ras family of membrane associated GTPases to which it binds directly. Once activated Raf-1 can phosphorylate to activate the dual specificity protein kinases MEK1 and MEK2 which in turn
Subcellular Location:	Cytoplasm. Cell membrane. Colocalizes with RGS14 and BRAF in both the cytoplasm and membranes.
Tissue Specificity:	In skeletal muscle, isoform 1 is more abundant than isoform 2.
Similarity:	Belongs to the protein kinase superfamily. TKL Ser/Thr protein kinase family. RAF subfamily.
Storage Condition and Buffer:	Rabbit IgG in phosphate buffered saline, pH 7.4, 150mM NaCl, 0.02% sodium azide and 50% glycerol. Store at -20 °C. Stable for 12 months from date of receipt.



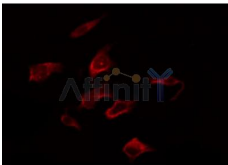
Western blot analysis of Phospho-C-RAF (Ser259) expression in various lysates



Western blot analysis of C-RAF phosphorylation expression in K562 whole cell lysates, The lane on the left is treated with the antigen-specific peptide.



AF3064 at 1/200 staining human colon carcinoma sections by IHC-P. The tissue was formaldehyde fixed and a heat mediated antigen retrieval step in citrate buffer was performed. The tissue was then blocked and incubated with the Ab for 1.5 hours at 22° C. An HRP conjugated goat anti-rabbit Ab was used as the secondary.



AF3064 staining HeLa by IF/ICC. The sample were fixed with PFA and permeabilized in 0.1% Triton X-100, then blocked in 10% serum for 45 minutes at 25°C. The primary Ab was diluted at 1/200 and incubated with the sample for 1 hour at 37°C. An Alexa Fluor 594 conjugated goat anti-rabbit IgG (H+L) Ab, diluted at 1/600, was used as the secondary Ab.

IMPORTANT: For western blot, incubate membrane with diluted primary Ab in 5% w/v milk, 1X TBS, 0.1% Tween@20 at 4°C with gentle shaking, overnight.

For Research Use Only. Not for use in diagnostic and therapeutic procedures. Not for resale without express authorization.