

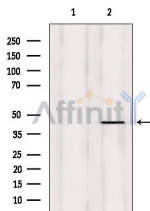
ERGI3 Ab

Cat.#: AF0676
Size: 100ul,200ul

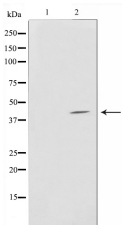
Concn.: 1mg/ml
Source: Rabbit

Mol.Wt.: 43kDa
Clonality: Polyclonal

| | |
|-------------------------------|--|
| Application: | WB 1:500-1:2000 IF/ICC 1:100-1:500 |
| Reactivity: | Human,Mouse |
| Purification: | The antiserum was purified by peptide affinity chromatography using SulfoLink™ Coupling Resin (Thermo Fisher Scientific). |
| Specificity: | ERGI3 Ab detects endogenous levels of ERGI3. |
| Immunogen: | A synthesized peptide derived from human ERGI3. |
| Uniprot: | Q9Y282 |
| Description: | SDBCAG84 Possible role in transport between endoplasmic reticulum and Golgi. Belongs to the ERGIC family. Interacts with ERGIC1/ERGIC32. 3 isoforms of the human protein are produced by alternative splicing. |
| Subcellular Location: | Endoplasmic reticulum;Golgi apparatus; |
| Similarity: | Belongs to the ERGIC family. |
| Storage Condition and Buffer: | Rabbit IgG in phosphate buffered saline , pH 7.4, 150mM NaCl, 0.02% sodium azide and 50% glycerol.Store at -20 °C.Stable for 12 months from date of receipt. |



Western blot analysis of extracts from HUVEC, using ERGI3 Ab. Lane 1 was treated with the blocking peptide.



Western blot analysis on LOVO cell lysate using ERGI3 Ab,The lane on the left is treated with the antigen-specific peptide.



AF0676 staining A549 cells by IF/ICC. The sample were fixed with PFA and permeabilized in 0.1% Triton X-100,then blocked in 10% serum for 45 minutes at 25°C. The primary Ab was diluted at 1/200 and incubated with the sample for 1 hour at 37°C. An Alexa Fluor 594 conjugated goat anti-rabbit IgG (H+L) Ab(Cat.# S0006), diluted at 1/600, was used as secondary Ab.

IMPORTANT: For western blot, incubate membrane with diluted primary Ab in 5% w/v milk , 1X TBS, 0.1% Tween@20 at 4°C with gentle shaking, overnight.

For Research Use Only. Not for use in diagnostic and therapeutic procedures. Not for resale without express authorization.