

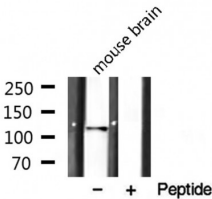
## RBM26 Ab

Cat.#: AF0654  
 Size: 100ul,200ul

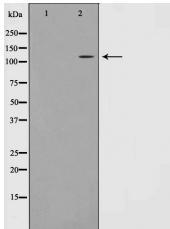
Concn.: 1mg/ml  
 Source: Rabbit

Mol.Wt.: 113kDa  
 Clonality: Polyclonal

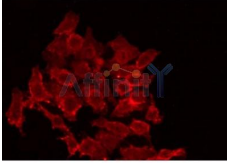
- Application:** WB 1:500-1:2000, IF/ICC 1:100-1:500
- Reactivity:** Human,Mouse
- Purification:** The antiserum was purified by peptide affinity chromatography using SulfoLink™ Coupling Resin (Thermo Fisher Scientific).
- Specificity:** RBM26 Ab detects endogenous levels of RBM26.
- Immunogen:** A synthesized peptide derived from human RBM26.
- Uniprot:** Q5T8P6
- Description:** RBM26 6 isoforms of the human protein are produced by alternative splicing. Note: This description may include information from UniProtKB.
- Storage Condition and Buffer:** Rabbit IgG in phosphate buffered saline , pH 7.4, 150mM NaCl, 0.02% sodium azide and 50% glycerol.Store at -20 °C.Stable for 12 months from date of receipt.



Western blot analysis on mouse brain lysate using RBM26 Ab



Western blot analysis on Jurkat cell lysate using RBM26 Ab,The lane on the left is treated with the antigen-specific peptide.



AF0654 staining Hela by IF/ICC. The sample were fixed with PFA and permeabilized in 0.1% Triton X-100, then blocked in 10% serum for 45 minutes at 25°C. The primary Ab was diluted at 1/200 and incubated with the sample for 1 hour at 37°C. An Alexa Fluor 594 conjugated goat anti-rabbit IgG (H+L) Ab, diluted at 1/600, was used as the secondary Ab.

**IMPORTANT:** For western blot, incubate membrane with diluted primary Ab in 5% w/v milk , 1X TBS, 0.1% Tween@20 at 4°C with gentle shaking, overnight.

For Research Use Only. Not for use in diagnostic and therapeutic procedures. Not for resale without express authorization.