

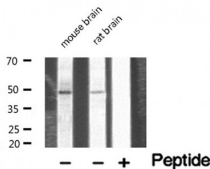
NDF2 Ab

Cat.#: AF0635
Size: 100ul,200ul

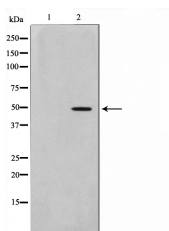
Concn.: 1mg/ml
Source: Rabbit

Mol.Wt.: 48kDa
Clonality: Polyclonal

Application:	WB 1:500-1:2000, IF/ICC 1:100-1:500
Reactivity:	Human,Mouse,Rat
Purification:	The antiserum was purified by peptide affinity chromatography using SulfoLink™ Coupling Resin (Thermo Fisher Scientific).
Specificity:	NDF2 Ab detects endogenous levels of NDF2.
Immunogen:	A synthesized peptide derived from human NDF2.
Uniprot:	Q15784
Description:	NEUROD2 Appears to mediate neuronal differentiation. Efficient DNA binding requires dimerization with another bHLH protein.
Subcellular Location:	Nucleus.
Similarity:	The C-terminal region is necessary for depolarization-induced and calcium-dependent transcription activation.
Storage Condition and Buffer:	Rabbit IgG in phosphate buffered saline , pH 7.4, 150mM NaCl, 0.02% sodium azide and 50% glycerol.Store at -20 °C.Stable for 12 months from date of receipt.



Western blot analysis of extracts of various tissue sample,using NDF2 Ab .



Western blot analysis on 293 cell lysate using NDF2 Ab,The lane on the left is treated with the antigen-specific peptide.



AF0635 staining 293 by IF/ICC. The sample were fixed with PFA and permeabilized in 0.1% Triton X-100, then blocked in 10% serum for 45 minutes at 25°C. The primary Ab was diluted at 1/200 and incubated with the sample for 1 hour at 37°C. An Alexa Fluor 594 conjugated goat anti-rabbit IgG (H+L) Ab, diluted at 1/600, was used as the secondary Ab.

IMPORTANT: For western blot, incubate membrane with diluted primary Ab in 5% w/v milk , 1X TBS, 0.1% Tween@20 at 4°C with gentle shaking, overnight.

For Research Use Only. Not for use in diagnostic and therapeutic procedures. Not for resale without express authorization.