

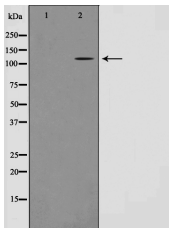
TUBGCP5 Ab

Cat.#: AF0621
Size: 100ul,200ul

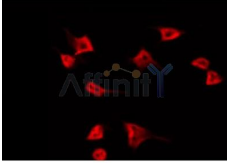
Concn.: 1mg/ml
Source: Rabbit

Mol.Wt.: 118kDa
Clonality: Polyclonal

| | |
|-------------------------------|---|
| Application: | WB 1:500-1:2000, IF/ICC 1:100-1:500 |
| Reactivity: | Human,Mouse,Rat |
| Purification: | The antiserum was purified by peptide affinity chromatography using SulfoLink™ Coupling Resin (Thermo Fisher Scientific). |
| Specificity: | TUBGCP5 Ab detects endogenous levels of TUBGCP5. |
| Immunogen: | A synthesized peptide derived from human TUBGCP5. |
| Uniprot: | Q96RT8 |
| Description: | GCP5 Gamma-tubulin complex is necessary for microtubule nucleation at the centrosome. Belongs to the GCP family. Gamma-tubulin complex is composed of gamma-tubulin, GCP2, GCP3, GCP4, GCP5 and GCP6. |
| Subcellular Location: | Cytoplasm > cytoskeleton > centrosome. |
| Tissue Specificity: | Widely expressed, with highest levels in heart and skeletal muscle and moderate levels in brain. |
| Similarity: | Belongs to the TUBGCP family. |
| Storage Condition and Buffer: | Rabbit IgG in phosphate buffered saline , pH 7.4, 150mM NaCl, 0.02% sodium azide and 50% glycerol.Store at -20 °C.Stable for 12 months from date of receipt. |



Western blot analysis on HT29 cell lysate using TUBGCP5 Ab,The lane on the left is treated with the antigen-specific peptide.



AF0621 staining HT29 by IF/ICC. The sample were fixed with PFA and permeabilized in 0.1% Triton X-100, then blocked in 10% serum for 45 minutes at 25°C. The primary Ab was diluted at 1/200 and incubated with the sample for 1 hour at 37°C. An Alexa Fluor 594 conjugated goat anti-rabbit IgG (H+L) Ab, diluted at 1/600, was used as the secondary Ab.

IMPORTANT: For western blot, incubate membrane with diluted primary Ab in 5% w/v milk , 1X TBS, 0.1% Tween@20 at 4°C with gentle shaking, overnight.

For Research Use Only. Not for use in diagnostic and therapeutic procedures. Not for resale without express authorization.