

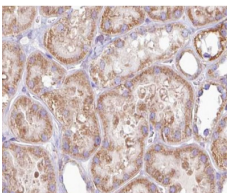
DGKH Ab

Cat.#: AF0611
Size: 100ul,200ul

Concn.: 1mg/ml
Source: Rabbit

Mol.Wt.: 134kDa
Clonality: Polyclonal

Application:	IHC 1:50-1:200 IF/ICC 1:100-1:500
Reactivity:	Human,Mouse
Purification:	The antiserum was purified by peptide affinity chromatography using SulfoLink™ Coupling Resin (Thermo Fisher Scientific).
Specificity:	DGKH Ab detects endogenous levels of DGKH.
Immunogen:	A synthesized peptide derived from human DGKH.
Uniprot:	Q86XP1
Description:	This gene encodes a member of the diacylglycerol kinase (DGK) enzyme family of proteins, specifically the type II DGK subfamily. Members of this family are involved in regulating the intracellular concentrations of diacylglycerol and phosphatidic acid. Two transcript variants encoding distinct isoforms have been identified for this gene.
Subcellular Location:	Cytoplasm. Translocated from the cytoplasm to endosomes in response to stress stimuli. Isoform 2 is rapidly relocated back to the cytoplasm upon removal of stress stimuli, whereas isoform 1 exhibits sustained endosomal association.
Tissue Specificity:	Isoform 2 is ubiquitously expressed. Isoform 1 is expressed only in testis, kidney and colon.
Similarity:	Belongs to the eukaryotic diacylglycerol kinase family.
Storage Condition and Buffer:	Rabbit IgG in phosphate buffered saline , pH 7.4, 150mM NaCl, 0.02% sodium azide and 50% glycerol.Store at -20 °C.Stable for 12 months from date of receipt.



AF0611 at 1/100 staining human kidney tissue sections by IHC-P. The tissue was formaldehyde fixed and a heat mediated antigen retrieval step in citrate buffer was performed. The tissue was then blocked and incubated with the Ab for 1.5 hours at 22°C. An HRP conjugated goat anti-rabbit Ab was used as the secondary.



AF0611 staining HeLa by IF/ICC. The sample were fixed with PFA and permeabilized in 0.1% Triton X-100, then blocked in 10% serum for 45 minutes at 25°C. The primary Ab was diluted at 1/200 and incubated with the sample for 1 hour at 37°C. An Alexa Fluor 594 conjugated goat anti-rabbit IgG (H+L) Ab, diluted at 1/600, was used as the secondary Ab.

IMPORTANT: For western blot, incubate membrane with diluted primary Ab in 5% w/v milk , 1X TBS, 0.1% Tween@20 at 4°C with gentle shaking, overnight.

For Research Use Only. Not for use in diagnostic and therapeutic procedures. Not for resale without express authorization.