

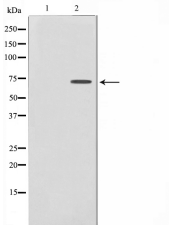
## DMPK Ab

Cat.#: AF0579  
Size: 100ul,200ul

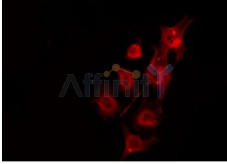
Concn.: 1mg/ml  
Source: Rabbit

Mol.Wt.: 70kDa  
Clonality: Polyclonal

Application:	WB 1:500-1:2000, IF/ICC 1:100-1:500
Reactivity:	Human
Purification:	The antiserum was purified by peptide affinity chromatography using SulfoLink™ Coupling Resin (Thermo Fisher Scientific).
Specificity:	DMPK Ab detects endogenous levels of DMPK.
Immunogen:	A synthesized peptide derived from human DMPK.
Uniprot:	Q09013
Description:	DMPK1 Critical to the modulation of cardiac contractility and to the maintenance of proper cardiac conduction activity. Phosphorylates phospholamban. Belongs to the protein kinase superfamily. AGC Ser/Thr protein kinase family. DMPK subfamily. Homodimer. 13 isoforms of the human protein are produced by alternative splicing.
Subcellular Location:	Plasma membrane;Endoplasmic reticulum;Cytosol;Nucleus;Mitochondrion;Mitochondrion;Mitochondrion;
Tissue Specificity:	Most isoforms are expressed in many tissues including heart, skeletal muscle, liver and brain, except for isoform 2 which is only found in the heart and skeletal muscle, and isoform 14 which is only found in the brain, with high levels in the striatum, cerebellar cortex and pons.
Similarity:	The coiled coil domain is required for homodimerization and regulates the enzymatic activity.Belongs to the protein kinase superfamily. AGC Ser/Thr protein kinase family. DMPK subfamily.
Storage Condition and Buffer:	Rabbit IgG in phosphate buffered saline , pH 7.4, 150mM NaCl, 0.02% sodium azide and 50% glycerol.Store at -20 °C.Stable for 12 months from date of receipt.



Western blot analysis on Jurkat cell lysate using DMPK Ab, The lane on the left is treated with the antigen-specific peptide.



AF0579 staining HeLa by IF/ICC. The sample were fixed with PFA and permeabilized in 0.1% Triton X-100, then blocked in 10% serum for 45 minutes at 25°C. The primary Ab was diluted at 1/200 and incubated with the sample for 1 hour at 37°C. An Alexa Fluor 594 conjugated goat anti-rabbit IgG (H+L) Ab, diluted at 1/600, was used as the secondary Ab.

**IMPORTANT:** For western blot, incubate membrane with diluted primary Ab in 5% w/v milk, 1X TBS, 0.1% Tween@20 at 4°C with gentle shaking, overnight.

For Research Use Only. Not for use in diagnostic and therapeutic procedures. Not for resale without express authorization.