

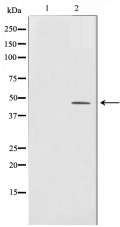
## AP-2 Ab

Cat.#: AF0535  
Size: 100ul,200ul

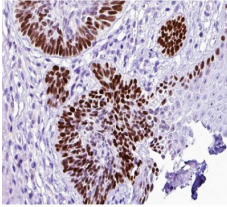
Concn.: 1mg/ml  
Source: Rabbit

Mol.Wt.: 49kDa  
Clonality: Polyclonal

|                               |   |
|-------------------------------|---|
| Application:                  | WB 1:500-1:2000 IHC 1:50-1:200, IF/ICC 1:100-1:500  |
| Reactivity:                   | Human,Mouse,Rat   |
| Purification:                 | The antiserum was purified by peptide affinity chromatography using SulfoLink™ Coupling Resin (Thermo Fisher Scientific).   |
| Specificity:                  | AP-2 Ab detects endogenous levels of AP-2.  |
| Immunogen:                    | A synthesized peptide derived from human AP-2.  |
| Uniprot:                      | P05549/Q92481   |
| Description:                  | AP-2 alpha Sequence-specific DNA-binding protein that interacts with inducible viral and cellular enhancer elements to regulate transcription of selected genes. AP-2 factors bind to the consensus sequence 5'-GCCNNNGGC-3' and activate genes involved in a large spectrum of important biological functions including proper eye, face, body wall, limb and neural tube development. They also suppress a number of genes including MCAM/MUC18, C/EBP alpha and MYC. AP-2-alpha is the only AP-2 protein required for early morphogenesis of the lens vesicle. Together with the CITED2 coactivator, stimulates the PITX2 P1 promoter transcription activation. Associates with chromatin to the PITX2 P1 promoter region. |
| Subcellular Location:         | Nucleus.  |
| Similarity:                   | The PPxY motif mediates interaction with WWOX.Belongs to the AP-2 family.   |
| Storage Condition and Buffer: | Rabbit IgG in phosphate buffered saline , pH 7.4, 150mM NaCl, 0.02% sodium azide and 50% glycerol.Store at -20 °C.Stable for 12 months from date of receipt.  |



Western blot analysis on COLO205 cell lysate using AP-2 Ab. The lane on the left is treated with the antigen-specific peptide.



AF0535 at 1/100 staining human skin cancer tissue sections by IHC-P. The tissue was formaldehyde fixed and a heat mediated antigen retrieval step in citrate buffer was performed. The tissue was then blocked and incubated with the Ab for 1.5 hours at 22°C. An HRP conjugated goat anti-rabbit Ab was used as the secondary.



AF0535 staining COLO205 by IF/ICC. The sample were fixed with PFA and permeabilized in 0.1% Triton X-100, then blocked in 10% serum for 45 minutes at 25°C. The primary Ab was diluted at 1/200 and incubated with the sample for 1 hour at 37°C. An Alexa Fluor 594 conjugated goat anti-rabbit IgG (H+L) Ab, diluted at 1/600, was used as the secondary Ab.

**IMPORTANT:** For western blot, incubate membrane with diluted primary Ab in 5% w/v milk, 1X TBS, 0.1% Tween@20 at 4°C with gentle shaking, overnight.

For Research Use Only. Not for use in diagnostic and therapeutic procedures. Not for resale without express authorization.