

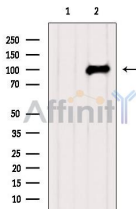
TUBGCP3 Ab

Cat.#: AF0438
Size: 100ul,200ul

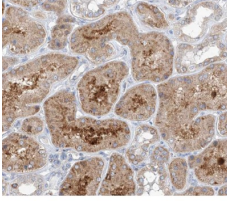
Concn.: 1mg/ml
Source: Rabbit

Mol.Wt.: 105kDa
Clonality: Polyclonal

Application:	IHC 1:50-1:200, WB 1:500-1:2000
Reactivity:	Human,Mouse
Purification:	The antiserum was purified by peptide affinity chromatography using SulfoLink™ Coupling Resin (Thermo Fisher Scientific).
Specificity:	TUBGCP3 Ab detects endogenous levels of TUBGCP3.
Immunogen:	A synthesized peptide derived from human TUBGCP3.
Uniprot:	Q96CW5
Description:	GCP3 Gamma-tubulin complex is necessary for microtubule nucleation at the centrosome. Belongs to the GCP family. Gamma-tubulin complex is composed of gamma-tubulin, GCP2, GCP3, GCP4, GCP5 and GCP6. 3 isoforms of the human protein are produced by alternative splicing.
Subcellular Location:	Cytoskeleton;
Tissue Specificity:	Ubiquitously expressed.
Similarity:	Belongs to the TUBGCP family.
Storage Condition and Buffer:	Rabbit IgG in phosphate buffered saline , pH 7.4, 150mM NaCl, 0.02% sodium azide and 50% glycerol.Store at -20 °C.Stable for 12 months from date of receipt.



Western blot analysis of extracts from HepG2, using TUBGCP3 Ab. The lane on the left was treated with blocking peptide.



AF0438 at 1/100 staining human kidney tissue sections by IHC-P. The tissue was formaldehyde fixed and a heat mediated antigen retrieval step in citrate buffer was performed. The tissue was then blocked and incubated with the Ab for 1.5 hours at 22°C. An HRP conjugated goat anti-rabbit Ab was used as the secondary.

IMPORTANT: For western blot, incubate membrane with diluted primary Ab in 5% w/v milk , 1X TBS, 0.1% Tween@20 at 4°C with gentle shaking, overnight.

For Research Use Only. Not for use in diagnostic and therapeutic procedures. Not for resale without express authorization.