

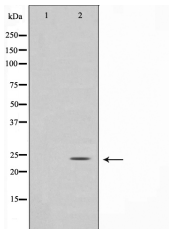
TIMP3 Ab

Cat.#: AF0265
Size: 100ul,200ul

Concn.: 1mg/ml
Source: Rabbit

Mol.Wt.: 25kDa
Clonality: Polyclonal

Application:	WB: 1:500~1:3000, IF/ICC 1:100-1:500
Reactivity:	Human,Mouse,Rat
Purification:	The antiserum was purified by peptide affinity chromatography using SulfoLink™ Coupling Resin (Thermo Fisher Scientific).
Specificity:	TIMP3 Ab detects endogenous levels of total TIMP3.
Immunogen:	A synthesized peptide derived from human TIMP3.
Uniprot:	P35625
Description:	TIMP3 Complexes with metalloproteinases (such as collagenases) and irreversibly inactivates them by binding to their catalytic zinc cofactor. May form part of a tissue-specific acute response to remodeling stimuli. Known to act on MMP1, MMP2, MMP3, MMP7, MMP9, MMP13, MMP14 and MMP15.
Subcellular Location:	Secreted > extracellular space > extracellular matrix.
Similarity:	Belongs to the protease inhibitor I35 (TIMP) family. [View classification]
Storage Condition and Buffer:	Rabbit IgG in phosphate buffered saline , pH 7.4, 150mM NaCl, 0.02% sodium azide and 50% glycerol.Store at -20 °C.Stable for 12 months from date of receipt.



Western blot analysis on HuvEc cell lysate using TIMP3 Ab, The lane on the left is treated with the antigen-specific peptide.



AF0265 staining HuvEc by IF/ICC. The sample were fixed with PFA and permeabilized in 0.1% Triton X-100, then blocked in 10% serum for 45 minutes at 25°C. The primary Ab was diluted at 1/200 and incubated with the sample for 1 hour at 37°C. An Alexa Fluor 594 conjugated goat anti-rabbit IgG (H+L) Ab, diluted at 1/600, was used as the secondary Ab.

IMPORTANT: For western blot, incubate membrane with diluted primary Ab in 5% w/v milk , 1X TBS, 0.1% Tween@20 at 4°C with gentle shaking, overnight.

For Research Use Only. Not for use in diagnostic and therapeutic procedures. Not for resale without express authorization.