

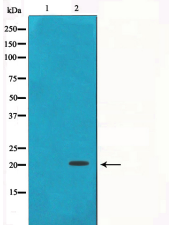
Gamma-synuclein Ab

Cat.#: AF0258
Size: 100ul,200ul

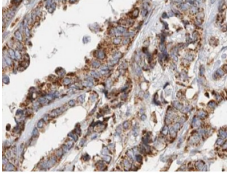
Concn.: 1mg/ml
Source: Rabbit

Mol.Wt.: 20kDa
Clonality: Polyclonal

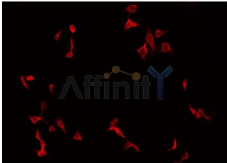
Application:	WB: 1:500~1:3000 IHC: 1:50~1:200, IF/ICC 1:100-1:500
Reactivity:	Human,Mouse,Rat
Purification:	The antiserum was purified by peptide affinity chromatography using SulfoLink™ Coupling Resin (Thermo Fisher Scientific).
Specificity:	Gamma-synuclein Ab detects endogenous levels of total Gamma-synuclein.
Immunogen:	A synthesized peptide derived from human Gamma-synuclein.
Uniprot:	O76070
Description:	SNCG a member of the synuclein family of proteins which are believed to be involved in the pathogenesis of neurodegenerative diseases. May be involved in modulating axonal architecture during development and in the adult. Plays a role in neurofilament network integrity. High levels have been identified in advanced breast carcinomas.
Subcellular Location:	Cytoplasm > perinuclear region. Cytoplasm > cytoskeleton > centrosome. Cytoplasm > cytoskeleton > spindle. Associated with centrosomes in several interphase cells. In mitotic cells, localized to the poles of the spindle.
Tissue Specificity:	Highly expressed in brain, particularly in the substantia nigra. Also expressed in the corpus callosum, heart, skeletal muscle, ovary, testis, colon and spleen. Weak expression in pancreas, kidney and lung.
Similarity:	Belongs to the synuclein family.
Storage Condition and Buffer:	Rabbit IgG in phosphate buffered saline , pH 7.4, 150mM NaCl, 0.02% sodium azide and 50% glycerol.Store at -20 °C.Stable for 12 months from date of receipt.



Western blot analysis on HT29 cell lysate using Gamma-synuclein Ab, The lane on the left is treated with the antigen-specific peptide.



AF0258 at 1/100 staining human breast carcinoma tissue sections by IHC-P. The tissue was formaldehyde fixed and a heat mediated antigen retrieval step in citrate buffer was performed. The tissue was then blocked and incubated with the Ab for 1.5 hours at 22°C. An HRP conjugated goat anti-rabbit Ab was used as the secondary.



AF0258 staining HT29 by IF/ICC. The sample were fixed with PFA and permeabilized in 0.1% Triton X-100, then blocked in 10% serum for 45 minutes at 25°C. The primary Ab was diluted at 1/200 and incubated with the sample for 1 hour at 37°C. An Alexa Fluor 594 conjugated goat anti-rabbit IgG (H+L) Ab, diluted at 1/600, was used as the secondary Ab.

IMPORTANT: For western blot, incubate membrane with diluted primary Ab in 5% w/v milk, 1X TBS, 0.1% Tween@20 at 4°C with gentle shaking, overnight.

For Research Use Only. Not for use in diagnostic and therapeutic procedures. Not for resale without express authorization.