

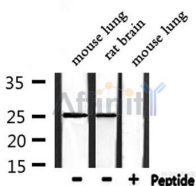
## RIT1 Ab

Cat.#: AF0250  
Size: 100ul,200ul

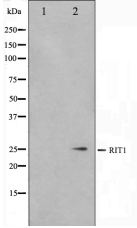
Concn.: 1mg/ml  
Source: Rabbit

Mol.Wt.: 25kDa  
Clonality: Polyclonal

Application:	WB: 1:500~1:3000, IF/ICC 1:100-1:500
Reactivity:	Human,Mouse,Rat
Purification:	The antiserum was purified by peptide affinity chromatography using SulfoLink™ Coupling Resin (Thermo Fisher Scientific).
Specificity:	RIT1 Ab detects endogenous levels of total RIT1.
Immunogen:	A synthesized peptide derived from human RIT1.
Uniprot:	Q92963
Description:	RIT1 Plays a crucial role in coupling NGF stimulation to the activation of both EPHB2 and MAPK14 signaling pathways and in NGF- dependent neuronal differentiation. Belongs to the small GTPase superfamily. Ras family. Interacts with MLLT4, the C-terminal domain of RALGDS and RLF, but not with RIN1 and PIK3CA. RLF binds exclusively to the active GTP-bound form.
Subcellular Location:	Cell membrane.
Tissue Specificity:	Expressed in many tissues.
Similarity:	Belongs to the small GTPase superfamily. Ras family.
Storage Condition and Buffer:	Rabbit IgG in phosphate buffered saline , pH 7.4, 150mM NaCl, 0.02% sodium azide and 50% glycerol.Store at -20 °C.Stable for 12 months from date of receipt.



Western blot analysis of extracts from mouse lung, rat brain, using RIT1 Ab.



Western blot analysis on Jurkat cell lysate using RIT1 Ab, The lane on the left is treated with the antigen-specific peptide.



AF0250 staining HeLa by IF/ICC. The sample were fixed with PFA and permeabilized in 0.1% Triton X-100, then blocked in 10% serum for 45 minutes at 25°C. The primary Ab was diluted at 1/200 and incubated with the sample for 1 hour at 37°C. An Alexa Fluor 594 conjugated goat anti-rabbit IgG (H+L) Ab, diluted at 1/600, was used as the secondary Ab.

**IMPORTANT:** For western blot, incubate membrane with diluted primary Ab in 5% w/v milk, 1X TBS, 0.1% Tween@20 at 4°C with gentle shaking, overnight.

For Research Use Only. Not for use in diagnostic and therapeutic procedures. Not for resale without express authorization.