

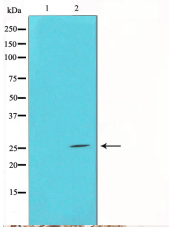
BIM Ab

Cat.#: AF0121
Size: 100ul,200ul

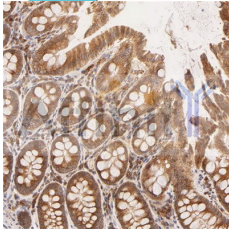
Concn.: 1mg/ml
Source: Rabbit

Mol.Wt.: 25kDa,22kDa
Clonality: Polyclonal

Application:	WB: 1:500~1:3000 IHC: 1:50~1:200
Reactivity:	Human,Mouse,Rat
Purification:	The antiserum was purified by peptide affinity chromatography using SulfoLink™ Coupling Resin (Thermo Fisher Scientific).
Specificity:	BIM Ab detects endogenous levels of total BIM.
Immunogen:	A synthesized peptide derived from human BIM.
Uniprot:	O43521
Description:	Bim a pro-apoptotic member of the BCL-2 protein family. Interacts with other members of the BCL-2 protein family, including BCL2, BCL2L1/BCL-X(L), and MCL1, and act as an apoptotic activator. Its expression can be induced by nerve growth factor (NGF), as well as by the forkhead transcription factor FKHR-L1, which suggests a role in neuronal and lymphocyte apoptosis. Transgenic studies in the mouse suggested that this protein functions as an essential initiator of the apoptosis in thymocyte-negative selection. Eight alternatively spliced transcript variants of this gene have been reported.
Subcellular Location:	Mitochondrion and Endomembrane system. Associated with intracytoplasmic membranes.
Tissue Specificity:	Isoform BimEL, isoform BimL and isoform BimS are the predominant isoforms and are widely expressed with tissue-specific variation. Isoform Bim-gamma is most abundantly expressed in small intestine and colon, and in lower levels in spleen, prostate, testis, heart, liver and kidney.
Similarity:	The BH3 motif is required for interaction with Bcl-2 proteins and cytotoxicity.Belongs to the Bcl-2 family.
Storage Condition and Buffer:	Rabbit IgG in phosphate buffered saline , pH 7.4, 150mM NaCl, 0.02% sodium azide and 50% glycerol.Store at -20 °C.Stable for 12 months from date of receipt.



Western blot analysis on COS7 cell lysate using BIM Ab, The lane on the left is treated with the antigen-specific peptide.



IHC analysis.

IMPORTANT: For western blot, incubate membrane with diluted primary Ab in 5% w/v milk , 1X TBS, 0.1% Tween@20 at 4°C with gentle shaking, overnight.

For Research Use Only. Not for use in diagnostic and therapeutic procedures. Not for resale without express authorization.