

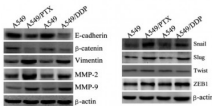
## Actin-pan Ab

Cat.#: AF0115  
 Size: 100ul,200ul

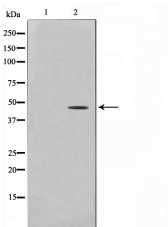
Concn.: 1mg/ml  
 Source: Rabbit

Mol.Wt.: 45kDa  
 Clonality: Polyclonal

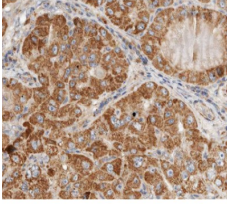
- Application:** WB: 1:500~1:3000 IHC: 1:50~1:200, IF/ICC 1:100-1:500
- Reactivity:** Human,Mouse,Rat
- Purification:** The antiserum was purified by peptide affinity chromatography using SulfoLink™ Coupling Resin (Thermo Fisher Scientific).
- Specificity:** Actin-pan Ab detects endogenous levels of total Actin-pan.
- Immunogen:** A synthesized peptide derived from human Actin-pan.
- Uniprot:** P60709/Q9BYX7/P63261
- Description:** ACT, Actin, cytoplasmic 1
- Subcellular Location:** Cytoplasm > cytoskeleton. Localized in cytoplasmic mRNP granules containing untranslated mRNAs.
- Similarity:** Belongs to the actin family.
- Storage Condition and Buffer:** Rabbit IgG in phosphate buffered saline , pH 7.4, 150mM NaCl, 0.02% sodium azide and 50% glycerol.Store at -20 °C.Stable for 12 months from date of receipt.



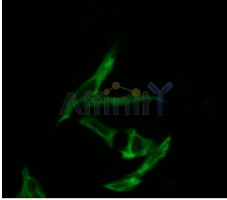
E-cadherin,  $\beta$ -catenin, vimentin, MMP-2 and MMP-9 which are EMT-related proteins, were assessed in terms of expression levels. EMT-related transcription factors (Snail, Slug, Twist and ZEB1) were measured in A549/PTX and A549/DDP cells using western blot analysis.



Western blot analysis on HeLa cell lysate using Actin-pan Ab.The lane on the left is treated with the antigen-specific peptide.



AF0108 at 1/100 staining human liver carcinoma tissue sections by IHC-P. The tissue was formaldehyde fixed and a heat mediated antigen retrieval step in citrate buffer was performed. The tissue was then blocked and incubated with the Ab for 1.5 hours at 22°C. An HRP conjugated goat anti-rabbit Ab was used as the secondary.



AF0115 staining HepG2 by IF/ICC. The sample were fixed with PFA and permeabilized in 0.1% Triton X-100, then blocked in 10% serum for 45 minutes at 25°C. The primary Ab was diluted at 1/200 and incubated with the sample for 1 hour at 37°C. An Alexa Fluor 594 conjugated goat anti-rabbit IgG (H+L) Ab, diluted at 1/600, was used as the secondary Ab.

**IMPORTANT:** For western blot, incubate membrane with diluted primary Ab in 5% w/v milk , 1X TBS, 0.1% Tween@20 at 4°C with gentle shaking, overnight.

For Research Use Only. Not for use in diagnostic and therapeutic procedures. Not for resale without express authorization.