

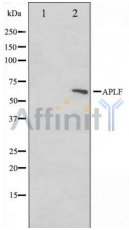
APLF Ab

Cat.#: AF0108
Size: 100ul,200ul

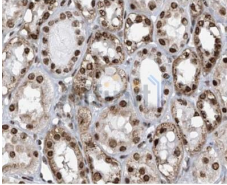
Concn.: 1mg/ml
Source: Rabbit

Mol.Wt.: 57kDa
Clonality: Polyclonal

Application:	WB: 1:500~1:3000 IHC: 1:50~1:200
Reactivity:	Human,Mouse
Purification:	The antiserum was purified by peptide affinity chromatography using SulfoLink™ Coupling Resin (Thermo Fisher Scientific).
Specificity:	APLF Ab detects endogenous levels of total APLF.
Immunogen:	A synthesized peptide derived from human APLF.
Uniprot:	Q8IW19
Description:	APLF Nuclease involved in single-strand and double-strand DNA break repair. Recruited to sites of DNA damage through interaction with poly(ADP-ribose), a polymeric post-translational modification synthesized transiently at sites of chromosomal damage to accelerate DNA strand break repair reactions. Displays apurinic- apyrimidinic (AP) endonuclease and 3'-5' exonuclease activities in vitro. Also able to introduce nicks at hydroxyuracil and other types of pyrimidine base damage. Belongs to the APLF family. Interacts with LIG4, PARP1, XRCC1, XRCC4 and XRCC5.
Subcellular Location:	Nucleus. Cytoplasm > cytosol. Localizes to DNA damage sites. Accumulates at single-strand breaks and double-strand breaks via the PBZ-type zinc fingers.
Similarity:	The PBZ-type zinc fingers (also named CYR) mediate non-covalent poly(ADP-ribose)-binding. Poly(ADP-ribose)-binding is dependent on the presence of zinc and promotes its recruitment to DNA damage sites.The FHA-like domain mediates interaction with XRCC1 and XRCC4.Belongs to the APLF family.
Storage Condition and Buffer:	Rabbit IgG in phosphate buffered saline , pH 7.4, 150mM NaCl, 0.02% sodium azide and 50% glycerol.Store at -20 °C.Stable for 12 months from date of receipt.



Western blot analysis on rat heart cell lysate using APLF Ab. The lane on the left is treated with the antigen-specific peptide.



IHC analysis of human kidney, using APLF Ab at 1/100.

IMPORTANT: For western blot, incubate membrane with diluted primary Ab in 5% w/v milk, 1X TBS, 0.1% Tween@20 at 4°C with gentle shaking, overnight.

For Research Use Only. Not for use in diagnostic and therapeutic procedures. Not for resale without express authorization.