

DANRE gnb1 Antibody (N-term)
Affinity Purified Rabbit Polyclonal Antibody (Pab)
Catalog # Azb10033a

Specification

DANRE gnb1 Antibody (N-term) - Product Information

Application	WB,E
Primary Accession	Q6PH57
Other Accession	P79959 , P54311 , P62874 , P62873 , Q6TMK6 , P62871
Reactivity Predicted	Zebrafish Bovine, Hamster, Human, Mouse, Rat, Xenopus
Host	Rabbit
Clonality	Polyclonal
Isotype	Rabbit Ig
Calculated MW	37286
Antigen Region	1-30

DANRE gnb1 Antibody (N-term) - Additional Information

Gene ID 322104

Other Names

Guanine nucleotide-binding protein G(I)/G(S)/G(T) subunit beta-1, Transducin beta chain 1, gnb1

Target/Specificity

This DANRE gnb1 antibody is generated from rabbits immunized with a KLH conjugated synthetic peptide between 1-30 amino acids from the N-terminal region of DANRE gnb1.

Dilution

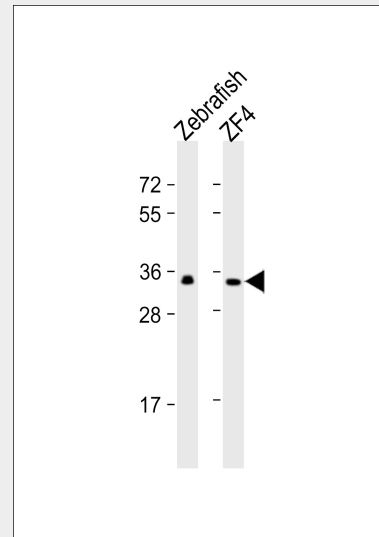
WB~~1:1000

Format

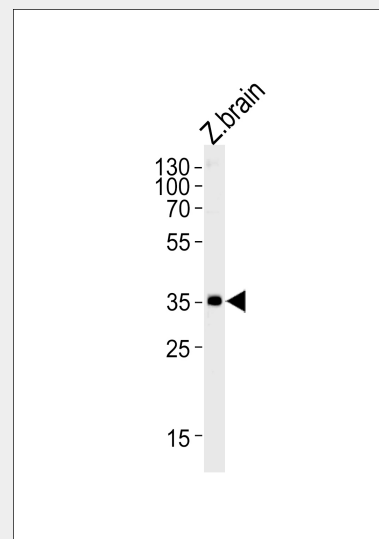
Purified polyclonal antibody supplied in PBS with 0.09% (W/V) sodium azide. This antibody is purified through a protein A column, followed by peptide affinity purification.

Storage

Maintain refrigerated at 2-8°C for up to 2



All lanes : Anti-(DANRE) gnb1 Antibody (center) at 1:1000 dilution Lane 1: Zebrafish lysate Lane 2: ZF4 whole cell lysate Lysates/proteins at 20 µg per lane. Secondary Goat Anti-Rabbit IgG, (H+L), Peroxidase conjugated at 1/10000 dilution. Predicted band size : 38 kDa Blocking/Dilution buffer: 5% NFDM/TBST.



DANRE gnb1 Antibody (N-term) (Cat. #Azb10033a) western blot analysis in zebra fish brain tissue lysates (35ug/lane).This

weeks. For long term storage store at -20°C in small aliquots to prevent freeze-thaw cycles.

Precautions

DANRE gnb1 Antibody (N-term) is for research use only and not for use in diagnostic or therapeutic procedures.

DANRE gnb1 Antibody (N-term) - Protein Information

Name gnb1

Function

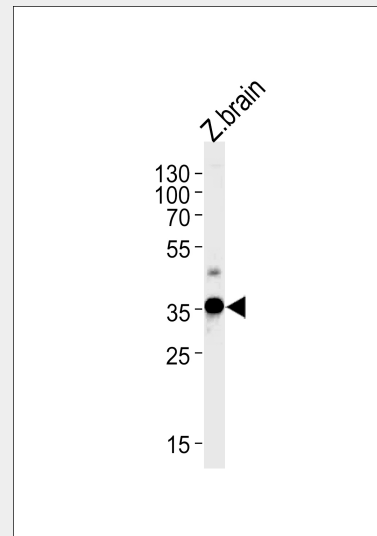
Guanine nucleotide-binding proteins (G proteins) are involved as a modulator or transducer in various transmembrane signaling systems. The beta and gamma chains are required for the GTPase activity, for replacement of GDP by GTP, and for G protein-effector interaction (By similarity).

DANRE gnb1 Antibody (N-term) - Protocols

Provided below are standard protocols that you may find useful for product applications.

- [Western Blot](#)
- [Blocking Peptides](#)
- [Dot Blot](#)
- [Immunohistochemistry](#)
- [Immunofluorescence](#)
- [Immunoprecipitation](#)
- [Flow Cytometry](#)
- [Cell Culture](#)

demonstrates the DANRE gnb1 antibody detected the DANRE gnb1 protein (arrow).



DANRE gnb1 Antibody (N-term) (Cat. #AzB10033a) western blot analysis in zebra fish brain tissue lysates (35ug/lane). This demonstrates the DANRE gnb1 antibody detected the DANRE gnb1 protein (arrow).

DANRE gnb1 Antibody (N-term) - Background

Guanine nucleotide-binding proteins (G proteins) are involved as a modulator or transducer in various transmembrane signaling systems. The beta and gamma chains are required for the GTPase activity, for replacement of GDP by GTP, and for G protein-effector interaction (By similarity).