

V5 Tag Antibody
Purified Rabbit Polyclonal Antibody (Pab)
Catalog # AW5670

Specification

V5 Tag Antibody - Product Information

Application	WB,E
Host	Rabbit
Clonality	Polyclonal
Calculated MW	45-50KD KDa
Isotype	Rabbit Ig
Antigen Source	HUMAN

V5 Tag Antibody - Additional Information

Antigen Region
 NA

Dilution
 WB~~1:1000

Target/Specificity
 This antibody is generated from a rabbit immunized with a KLH conjugated synthetic peptide of V5 tag.

Storage
 Maintain refrigerated at 2-8°C for up to 2 weeks. For long term storage store at -20°C in small aliquots to prevent freeze-thaw cycles.

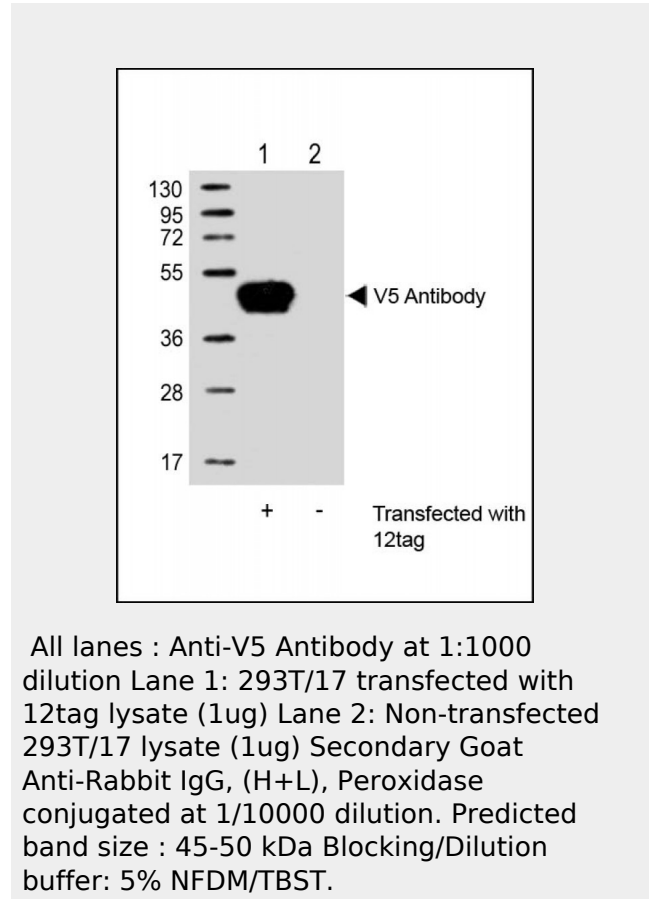
Precautions
 V5 Tag Antibody is for research use only and not for use in diagnostic or therapeutic procedures.

V5 Tag Antibody - Protein Information

V5 Tag Antibody - Protocols

Provided below are standard protocols that you may find useful for product applications.

- [Western Blot](#)
- [Blocking Peptides](#)
- [Dot Blot](#)



- [Immunohistochemistry](#)
- [Immunofluorescence](#)
- [Immunoprecipitation](#)
- [Flow Cytometry](#)
- [Cell Culture](#)