

HSV tag Antibody
Purified Rabbit Polyclonal Antibody (Pab)
Catalog # AW5658

Specification

HSV tag Antibody - Product Information

Application	WB,E
Primary Accession	NA
Host	Rabbit
Clonality	Polyclonal
Calculated MW	42 KDa
Isotype	Rabbit Ig
Antigen Source	HUMAN

HSV tag Antibody - Additional Information

Antigen Region
NA

Dilution
WB~~1:1000

Target/Specificity
This HSV tag antibody is generated from a rabbit immunized with a KLH conjugated synthetic peptide.

Storage
Maintain refrigerated at 2-8°C for up to 2 weeks. For long term storage store at -20°C in small aliquots to prevent freeze-thaw cycles.

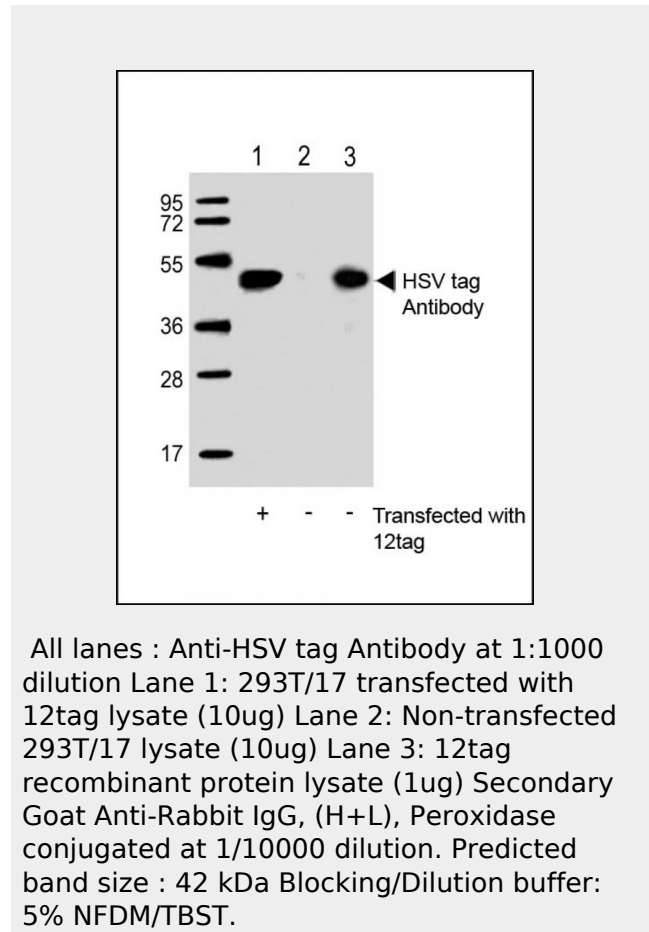
Precautions
HSV tag Antibody is for research use only and not for use in diagnostic or therapeutic procedures.

HSV tag Antibody - Protein Information

HSV tag Antibody - Protocols

Provided below are standard protocols that you may find useful for product applications.

- [Western Blot](#)
- [Blocking Peptides](#)



- [Dot Blot](#)
- [Immunohistochemistry](#)
- [Immunofluorescence](#)
- [Immunoprecipitation](#)
- [Flow Cytometry](#)
- [Cell Culture](#)