

**(DANRE) usp13 Antibody (Center)**  
**Purified Rabbit Polyclonal Antibody (Pab)**  
**Catalog # AW5428**

**Specification**

**(DANRE) usp13 Antibody (Center) - Product Information**

Application	WB,E
Primary Accession	<a href="#">F1QFS9</a>
Other Accession	<a href="#">Q5BKP2</a> , <a href="#">Q92995</a> , <a href="#">E1BY77</a> , <a href="#">E1BMF7</a>
Reactivity Predicted	Zebrafish Bovine, Chicken, Human, Mouse
Host	Rabbit
Clonality	Polyclonal
Calculated MW	Z=97; H=97; M=98 KDa
Isotype	Rabbit Ig
Antigen Source	HUMAN

**(DANRE) usp13 Antibody (Center) - Additional Information**

**Gene ID** 558011

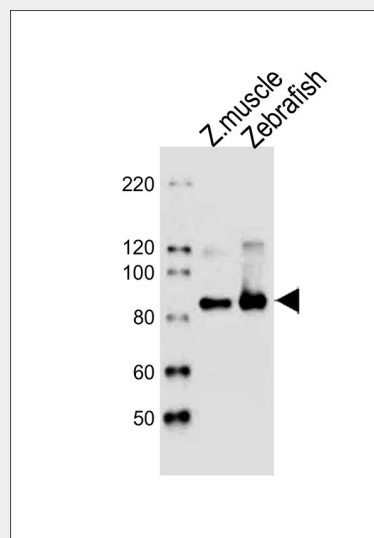
**Antigen Region**  
387-420

**Other Names**  
Ubiquitin carboxyl-terminal hydrolase 13,  
Deubiquitinating enzyme 13, Ubiquitin  
thioesterase 13,  
Ubiquitin-specific-processing protease 13,  
usp13

**Dilution**  
WB~~1:1000

**Target/Specificity**  
This DANRE usp13 antibody is generated from a rabbit immunized with a KLH conjugated synthetic peptide between 387-420 amino acids from the Central region of DANRE usp13.

**Format**  
Purified polyclonal antibody supplied in PBS with 0.09% (W/V) sodium azide. This antibody is purified through a protein A column, followed by peptide affinity



All lanes : Anti-usp13 Antibody (Center) at 1:1000 dilution Lane 1: Zebrafish muscle lysates Lane 2: Zebrafish lysates Lysates/proteins at 20 µg per lane. Secondary Goat Anti-Rabbit IgG, (H+L), Peroxidase conjugated at 1/10000 dilution Predicted band size : 97 kDa Blocking/Dilution buffer: 5% NFDM/TBST.

**(DANRE) usp13 Antibody (Center) - Background**

Deubiquitinase that mediates deubiquitination of target proteins and is involved in various processes such as autophagy and endoplasmic reticulum-associated degradation (ERAD) (By similarity).

**(DANRE) usp13 Antibody (Center) - References**

Howe K., et al. Nature 496:498-503(2013).

purification.

**Storage**

Maintain refrigerated at 2-8°C for up to 2 weeks. For long term storage store at -20°C in small aliquots to prevent freeze-thaw cycles.

**Precautions**

(DANRE) usp13 Antibody (Center) is for research use only and not for use in diagnostic or therapeutic procedures.

**(DANRE) usp13 Antibody (Center) - Protein Information**

**Name** usp13

**Function**

Deubiquitinase that mediates deubiquitination of target proteins and is involved in various processes such as autophagy and endoplasmic reticulum-associated degradation (ERAD).

**(DANRE) usp13 Antibody (Center) - Protocols**

Provided below are standard protocols that you may find useful for product applications.

- [Western Blot](#)
- [Blocking Peptides](#)
- [Dot Blot](#)
- [Immunohistochemistry](#)
- [Immunofluorescence](#)
- [Immunoprecipitation](#)
- [Flow Cytometry](#)
- [Cell Culture](#)