

SIP1 Antibody (C-term)

Purified Rabbit Polyclonal Antibody (Pab)

Catalog # AW5318

Specification

SIP1 Antibody (C-term) - Product Information

Application	WB,E
Primary Accession	O14893
Reactivity	Human
Predicted	Mouse, Rat
Host	Rabbit
Clonality	polyclonal
Calculated MW	H=32,30;M=30;Ra t=30 KDa
Isotype	Rabbit Ig
Antigen Source	HUMAN

SIP1 Antibody (C-term) - Additional Information

Gene ID 8487

Antigen Region
244-277

Other Names

Gem-associated protein 2, Gemin-2,
Component of gems 2, Survival of motor
neuron protein-interacting protein 1,
SMN-interacting protein 1, GEMIN2, SIP1

Dilution

WB~~1:1000

Target/Specificity

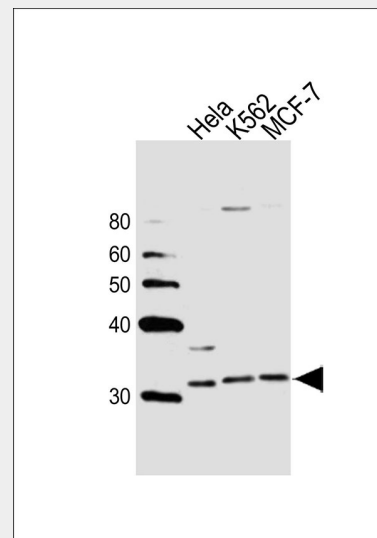
This SIP1 antibody is generated from a rabbit immunized with a KLH conjugated synthetic peptide between 244-277 amino acids from the C-terminal region of human SIP1.

Format

Purified polyclonal antibody supplied in PBS with 0.09% (W/V) sodium azide. This antibody is purified through a protein A column, followed by peptide affinity purification.

Storage

Maintain refrigerated at 2-8°C for up to 2 weeks. For long term storage store at -20°C in small aliquots to prevent freeze-thaw



Western blot analysis of lysates from HeLa, K562, MCF-7 cell line (from left to right), using SIP1 Antibody (C-term) (Cat. #AW5318). AW5318 was diluted at 1:1000 at each lane. A goat anti-rabbit IgG H&L (HRP) at 1:10000 dilution was used as the secondary antibody. Lysates at 20ug per lane.

SIP1 Antibody (C-term) - Background

The SMN complex plays a catalyst role in the assembly of small nuclear ribonucleoproteins (snRNPs), the building blocks of the spliceosome. Thereby, plays an important role in the splicing of cellular pre-mRNAs. Most spliceosomal snRNPs contain a common set of Sm proteins SNRPB, SNRPD1, SNRPD2, SNRPD3, SNRPE, SNRPF and SNRPG that assemble in a heptameric protein ring on the Sm site of the small nuclear RNA to form the core snRNP. In the cytosol, the Sm proteins SNRPD1, SNRPD2, SNRPE, SNRPF and SNRPG are trapped in an inactive 6S pICln-Sm complex by the chaperone CLNS1A that controls the assembly of the core snRNP. Dissociation by the SMN complex of CLNS1A from the trapped Sm proteins and their transfer to an SMN-Sm complex triggers the

cycles.

Precautions

SIP1 Antibody (C-term) is for research use only and not for use in diagnostic or therapeutic procedures.

SIP1 Antibody (C-term) - Protein Information

Name GEMIN2

Synonyms SIP1

Function

The SMN complex plays a catalyst role in the assembly of small nuclear ribonucleoproteins (snRNPs), the building blocks of the spliceosome. Thereby, plays an important role in the splicing of cellular pre-mRNAs. Most spliceosomal snRNPs contain a common set of Sm proteins SNRPB, SNRPD1, SNRPD2, SNRPD3, SNRPE, SNRPF and SNRPG that assemble in a heptameric protein ring on the Sm site of the small nuclear RNA to form the core snRNP. In the cytosol, the Sm proteins SNRPD1, SNRPD2, SNRPE, SNRPF and SNRPG are trapped in an inactive 6S pICln-Sm complex by the chaperone CLNS1A that controls the assembly of the core snRNP. Dissociation by the SMN complex of CLNS1A from the trapped Sm proteins and their transfer to an SMN-Sm complex triggers the assembly of core snRNPs and their transport to the nucleus.

Cellular Location

Nucleus, gem. Cytoplasm. Note=Localized in subnuclear structures next to coiled bodies, called gems, which are highly enriched in spliceosomal snRNPs. Also found in the cytoplasm

assembly of core snRNPs and their transport to the nucleus.

SIP1 Antibody (C-term) - References

Liu Q., et al. Cell 90:1013-1021(1997).
Aerbajinai W., et al. Int. J. Biochem. Cell Biol. 34:699-707(2002).
Helmken C., et al. Eur. J. Hum. Genet. 8:493-499(2000).
Ota T., et al. Nat. Genet. 36:40-45(2004).
Gubitz A.K., et al. J. Biol. Chem. 277:5631-5636(2002).

SIP1 Antibody (C-term) - Protocols

Provided below are standard protocols that you may find useful for product applications.

- [Western Blot](#)
- [Blocking Peptides](#)
- [Dot Blot](#)
- [Immunohistochemistry](#)
- [Immunofluorescence](#)
- [Immunoprecipitation](#)

- [Flow Cytometry](#)
- [Cell Culture](#)