

STK6 Antibody (monoclonal) (M01)

Mouse monoclonal antibody raised against a partial recombinant STK6.

Catalog # AT4091a

Specification**STK6 Antibody (monoclonal) (M01) - Product Information**

Application	IF, WB, IHC, E
Primary Accession	O14965
Other Accession	NM_198433
Reactivity	Human
Host	Mouse
Clonality	Monoclonal
Isotype	IgG2a Kappa
Calculated MW	45809

STK6 Antibody (monoclonal) (M01) - Additional Information

Gene ID 6790

Other Names

Aurora kinase A, Aurora 2,
Aurora/IPL1-related kinase 1, ARK-1,
Aurora-related kinase 1, hARK1, Breast
tumor-amplified kinase,
Serine/threonine-protein kinase 15,
Serine/threonine-protein kinase 6,
Serine/threonine-protein kinase aurora-A,
AURKA

Target/Specificity

AURKA (NP_940835, 1 a.a. ~ 110 a.a)
partial recombinant protein with GST tag.
MW of the GST tag alone is 26 KDa.

Dilution

WB~~1:500~1000

Format

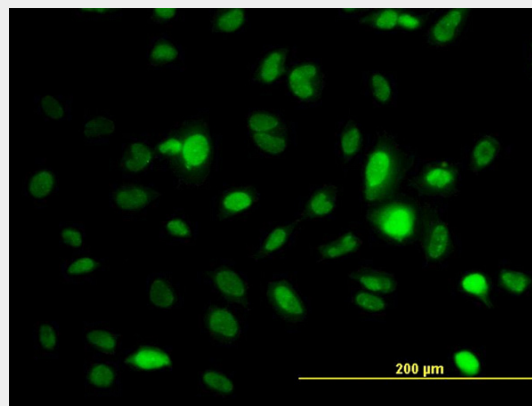
Clear, colorless solution in phosphate
buffered saline, pH 7.2 .

Storage

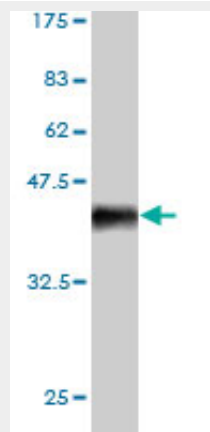
Store at -20°C or lower. Aliquot to avoid
repeated freezing and thawing.

Precautions

STK6 Antibody (monoclonal) (M01) is for
research use only and not for use in



Immunofluorescence of monoclonal antibody to STK6 on HeLa cell. [antibody concentration 30 ug/ml]



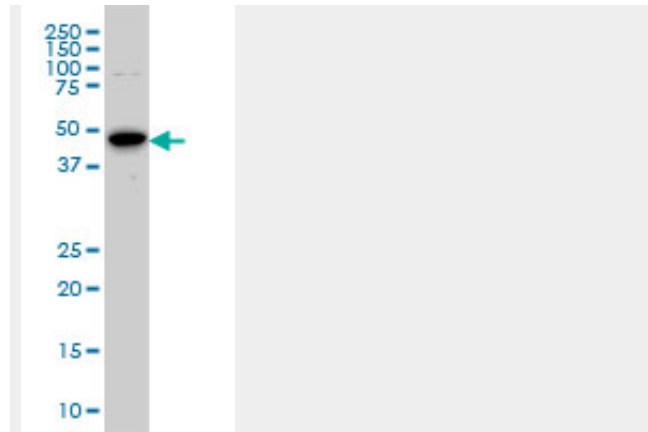
Antibody Reactive Against Recombinant Protein. Western Blot detection against Immunogen (37.84 KDa) .

diagnostic or therapeutic procedures.

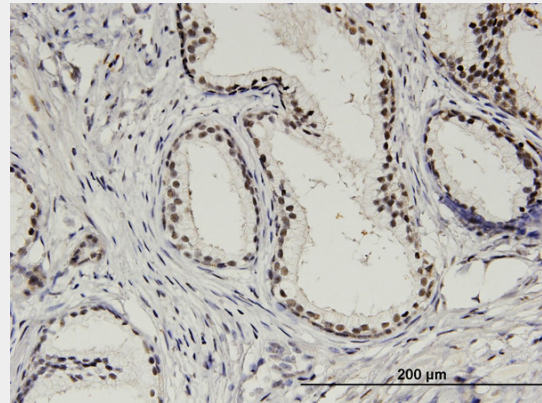
STK6 Antibody (monoclonal) (M01) - Protocols

Provided below are standard protocols that you may find useful for product applications.

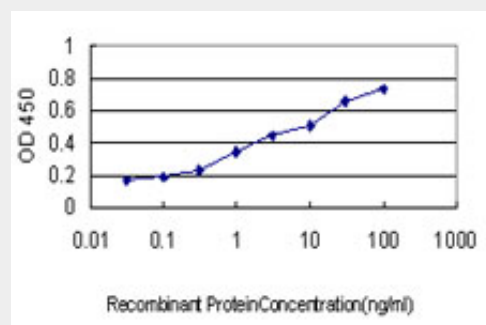
- [Western Blot](#)
- [Blocking Peptides](#)
- [Dot Blot](#)
- [Immunohistochemistry](#)
- [Immunofluorescence](#)
- [Immunoprecipitation](#)
- [Flow Cytometry](#)
- [Cell Culture](#)



STK6 monoclonal antibody (M01), clone 5F8
Western Blot analysis of STK6 expression in HeLa S3 NE (Cat # AT4091a)



Immunoperoxidase of monoclonal antibody to STK6 on formalin-fixed paraffin-embedded human prostate. [antibody concentration 6 ug/ml]



Detection limit for recombinant GST tagged STK6 is approximately 0.1ng/ml as a capture antibody.

STK6 Antibody (monoclonal) (M01) - Background

The protein encoded by this gene is a cell cycle-regulated kinase that appears to be

involved in microtubule formation and/or stabilization at the spindle pole during chromosome segregation. The encoded protein is found at the centrosome in interphase cells and at the spindle poles in mitosis. This gene may play a role in tumor development and progression. A processed pseudogene of this gene has been found on chromosome 1, and an unprocessed pseudogene has been found on chromosome 10. Multiple transcript variants encoding the same protein have been found for this gene.

**STK6 Antibody (monoclonal) (M01) -
References**

- 1.KIBRA Protein Phosphorylation Is Regulated by Mitotic Kinase Aurora and Protein Phosphatase 1.Xiao L, Chen Y, Ji M, Volle DJ, Lewis RE, Tsai MY, Dong J.J Biol Chem. 2011 Oct 21;286(42):36304-15. Epub 2011 Aug 30.2.Aurora Kinase A expression is associated with lung cancer histological-subtypes and with tumor de-differentiation.Lo Iacono M, Monica V, Saviozzi S, Ceppi P, Bracco E, Papotti M, Scagliotti GV.J Transl Med. 2011 Jun 30;9:100.