

SPINLW1 Antibody (monoclonal) (M02A)

Mouse monoclonal antibody raised against a partial recombinant SPINLW1.

Catalog # AT4024a

Specification

SPINLW1 Antibody (monoclonal) (M02A) - Product Information

Application	WB
Primary Accession	O95925
Other Accession	NM_020398
Reactivity	Human
Host	mouse
Clonality	Monoclonal
Isotype	IgM Kappa
Calculated MW	15284

SPINLW1 Antibody (monoclonal) (M02A) - Additional Information

Gene ID 100526773;57119

Other Names

Eppin, Cancer/testis antigen 71, CT71, Epididymal protease inhibitor, Protease inhibitor WAP7, Serine protease inhibitor-like with Kunitz and WAP domains 1, WAP four-disulfide core domain protein 7, EPPIN, SPINLW1, WAP7, WFDC7

Target/Specificity

SPINLW1 (NP_065131, 22 a.a. ~ 133 a.a) partial recombinant protein with GST tag. MW of the GST tag alone is 26 KDa.

Dilution

WB~~1:500~1000

Format

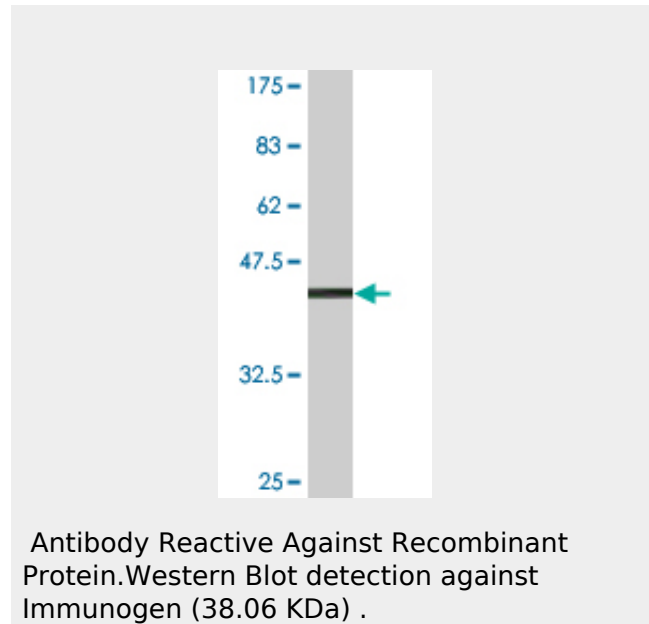
Clear, colorless solution in phosphate buffered saline, pH 7.2 .

Storage

Store at -20°C or lower. Aliquot to avoid repeated freezing and thawing.

Precautions

SPINLW1 Antibody (monoclonal) (M02A) is for research use only and not for use in diagnostic or therapeutic procedures.



SPINLW1 Antibody (monoclonal) (M02A) - Background

This gene encodes an epididymal protease inhibitor, which contains both kunitz-type and WAP-type four-disulfide core (WFDC) protease inhibitor consensus sequences. Most WFDC genes are localized to chromosome 20q12-q13 in two clusters: centromeric and telomeric. This gene is a member of the WFDC gene family and belongs to the telomeric cluster. Alternatively spliced transcript variants encoding distinct isoforms have been found for this gene.

SPINLW1 Antibody (monoclonal) (M02A) - References

Variants of the EPPIN gene affect the risk of idiopathic male infertility in the Han-Chinese population. Ding X, et al. Hum Reprod, 2010 Jul. PMID 20488803. Variants in the Eppin gene show association with semen quality in Han-Chinese population. Ding X, et al. Reprod Biomed Online, 2010 Jan. PMID 20158997. Analysis of recombinant human semenogelin as an inhibitor of human sperm

**SPINLW1 Antibody (monoclonal) (M02A) -
Protocols**

Provided below are standard protocols that you may find useful for product applications.

- [Western Blot](#)
- [Blocking Peptides](#)
- [Dot Blot](#)
- [Immunohistochemistry](#)
- [Immunofluorescence](#)
- [Immunoprecipitation](#)
- [Flow Cytometry](#)
- [Cell Culture](#)

motility. Mitra A, et al. Biol Reprod, 2010 Mar. PMID 19889947. The effect of anti-eppin antibodies on ionophore A23187-induced calcium influx and acrosome reaction of human spermatozoa. Zhang J, et al. Hum Reprod, 2010 Jan. PMID 19801569. Molecular mechanism of epididymal protease inhibitor modulating the liquefaction of human semen. Wang ZJ, et al. Asian J Androl, 2008 Sep. PMID 18645681.