

SMNDC1 Antibody (monoclonal) (M01)

Mouse monoclonal antibody raised against a full length recombinant SMNDC1.

Catalog # AT3958a

Specification

SMNDC1 Antibody (monoclonal) (M01) - Product Information

Application	WB, IHC
Primary Accession	O75940
Other Accession	BC011234
Reactivity	Human
Host	mouse
Clonality	Monoclonal
Isotype	IgG1 kappa
Calculated MW	26711

SMNDC1 Antibody (monoclonal) (M01) - Additional Information

Gene ID 10285

Other Names

Survival of motor neuron-related-splicing factor 30, 30 kDa splicing factor SMNrp, SMN-related protein, Survival motor neuron domain-containing protein 1, SMNDC1, SMNR, SPF30

Target/Specificity

SMNDC1 (AAH11234, 1 a.a. ~ 238 a.a) full-length recombinant protein with GST tag. MW of the GST tag alone is 26 KDa.

Dilution

WB~~1:500~1000

Format

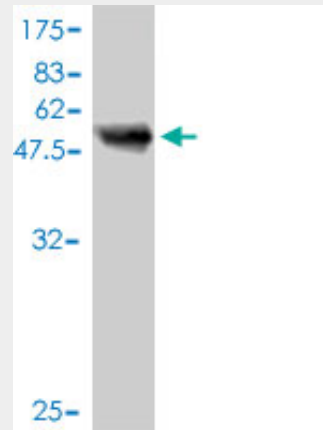
Clear, colorless solution in phosphate buffered saline, pH 7.2 .

Storage

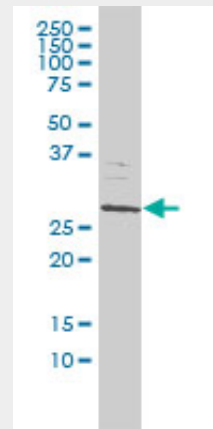
Store at -20°C or lower. Aliquot to avoid repeated freezing and thawing.

Precautions

SMNDC1 Antibody (monoclonal) (M01) is for research use only and not for use in diagnostic or therapeutic procedures.



Antibody Reactive Against Recombinant Protein. Western Blot detection against Immunogen (51.92 KDa) .

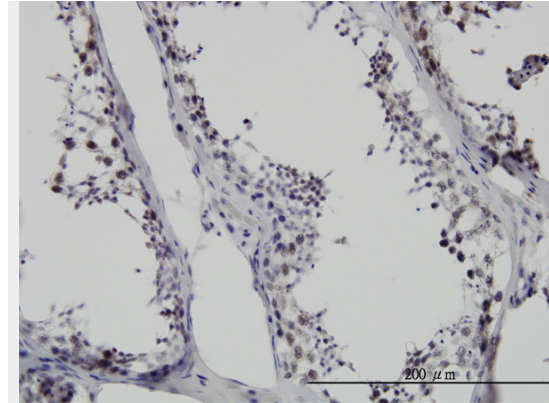


SMNDC1 monoclonal antibody (M01), clone 2B9 Western Blot analysis of SMNDC1 expression in Jurkat ((Cat # AT3958a)

SMNDC1 Antibody (monoclonal) (M01) - Protocols

Provided below are standard protocols that you may find useful for product applications.

- [Western Blot](#)
- [Blocking Peptides](#)
- [Dot Blot](#)
- [Immunohistochemistry](#)
- [Immunofluorescence](#)
- [Immunoprecipitation](#)
- [Flow Cytometry](#)
- [Cell Culture](#)



Immunoperoxidase of monoclonal antibody to SMNDC1 on formalin-fixed paraffin-embedded human testis. [antibody concentration 6 ug/ml]

SMNDC1 Antibody (monoclonal) (M01) - Background

This gene is a paralog of SMN1 gene, which encodes the survival motor neuron protein, mutations in which are cause of autosomal recessive proximal spinal muscular atrophy. The protein encoded by this gene is a nuclear protein that has been identified as a constituent of the spliceosome complex. This gene is differentially expressed, with abundant levels in skeletal muscle, and may share similar cellular function as the SMN1 gene.

SMNDC1 Antibody (monoclonal) (M01) - References

Splicing factor Spf30 assists exosome-mediated gene silencing in fission yeast. Bernard P, et al. Mol Cell Biol, 2010 Mar. PMID 20028739. Splicing factor SPF30 bridges an interaction between the prespliceosome protein U2AF35 and tri-small nuclear ribonucleoprotein protein hPrp3. Little JT, et al. J Biol Chem, 2008 Mar 28. PMID 18211889. Large-scale mapping of human protein-protein interactions by mass spectrometry. Ewing RM, et al. Mol Syst Biol, 2007. PMID 17353931. A probability-based approach for high-throughput protein phosphorylation analysis and site localization. Beausoleil SA, et al. Nat Biotechnol, 2006 Oct. PMID 16964243. A scan of chromosome 10 identifies a novel locus showing strong association with late-onset Alzheimer disease. Grupe A, et al. Am J Hum Genet, 2006 Jan.

PMID 16385451.