

## PARVB Antibody (monoclonal) (M01)

Mouse monoclonal antibody raised against a full length recombinant PARVB.

Catalog # AT3184a

### Specification

#### PARVB Antibody (monoclonal) (M01) - Product Information

|                   |                          |
|-------------------|--------------------------|
| Application       | WB, E                    |
| Primary Accession | <a href="#">Q9HBI1</a>   |
| Other Accession   | <a href="#">BC046103</a> |
| Reactivity        | Human                    |
| Host              | mouse                    |
| Clonality         | Monoclonal               |
| Isotype           | IgG2b kappa              |
| Calculated MW     | 41714                    |

#### PARVB Antibody (monoclonal) (M01) - Additional Information

Gene ID 29780

#### Other Names

Beta-parvin, Affixin, PARVB

#### Target/Specificity

PARVB (AAH46103, 1 a.a. ~ 350 a.a)  
full-length recombinant protein with GST tag. MW of the GST tag alone is 26 KDa.

#### Dilution

WB~~1:500~1000

#### Format

Clear, colorless solution in phosphate buffered saline, pH 7.2 .

#### Storage

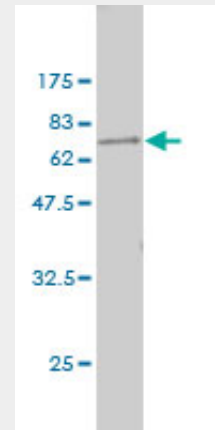
Store at -20°C or lower. Aliquot to avoid repeated freezing and thawing.

#### Precautions

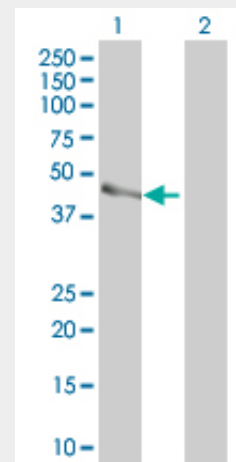
PARVB Antibody (monoclonal) (M01) is for research use only and not for use in diagnostic or therapeutic procedures.

#### PARVB Antibody (monoclonal) (M01) - Protocols

Provided below are standard protocols that you



Antibody Reactive Against Recombinant Protein. Western Blot detection against Immunogen (64.24 KDa) .

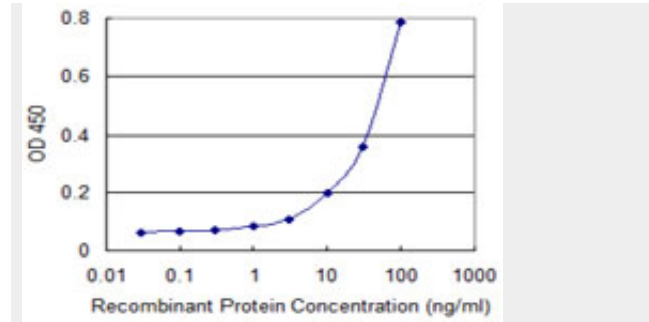


Western Blot analysis of PARVB expression in transfected 293T cell line by PARVB monoclonal antibody (M01), clone 4A11.

Lane 1: PARVB transfected lysate(40.25 KDa).  
Lane 2: Non-transfected lysate.

may find useful for product applications.

- [Western Blot](#)
- [Blocking Peptides](#)
- [Dot Blot](#)
- [Immunohistochemistry](#)
- [Immunofluorescence](#)
- [Immunoprecipitation](#)
- [Flow Cytometry](#)
- [Cell Culture](#)



Detection limit for recombinant GST tagged PARVB is 1 ng/ml as a capture antibody.

### **PARVB Antibody (monoclonal) (M01) - Background**

Members of the parvin family, including PARVB, are actin-binding proteins associated with focal contacts.

### **PARVB Antibody (monoclonal) (M01) - References**

1.Expression of parvin-beta is a prognostic factor for patients with urothelial cell carcinoma of the upper urinary tract.Wu CF, Ng KF, Chen CS, Chang PL, Chuang CK, Weng WH, Liao SK, Pang ST.Br J Cancer. 2010 Sep 7;103(6):852-60. Epub 2010 Aug 24.