

## KLRC3 Antibody (monoclonal) (M01)

Mouse monoclonal antibody raised against a partial recombinant KLRC3.

Catalog # AT2644a

### Specification

#### KLRC3 Antibody (monoclonal) (M01) - Product Information

Application	WB, E
Primary Accession	<a href="#">Q07444</a>
Other Accession	<a href="#">NM_002261</a>
Reactivity	Human
Host	mouse
Clonality	Monoclonal
Isotype	IgG2a Kappa
Calculated MW	27100

#### KLRC3 Antibody (monoclonal) (M01) - Additional Information

Gene ID 3823

#### Other Names

NKG2-E type II integral membrane protein, NK cell receptor E, NKG2-E-activating NK receptor, KLRC3, NKG2E

#### Target/Specificity

KLRC3 (NP\_002252, 132 a.a. ~ 240 a.a) partial recombinant protein with GST tag. MW of the GST tag alone is 26 KDa.

#### Dilution

WB ~ 1:500 ~ 1000

#### Format

Clear, colorless solution in phosphate buffered saline, pH 7.2 .

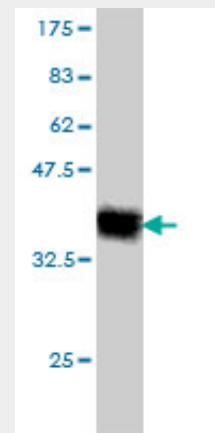
#### Storage

Store at -20°C or lower. Aliquot to avoid repeated freezing and thawing.

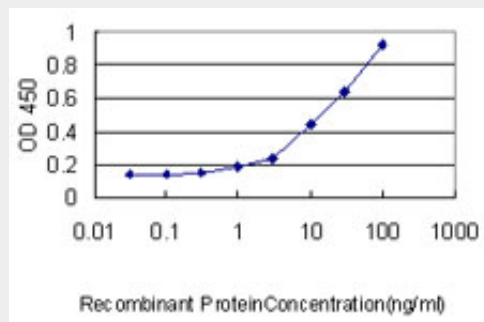
#### Precautions

KLRC3 Antibody (monoclonal) (M01) is for research use only and not for use in diagnostic or therapeutic procedures.

#### KLRC3 Antibody (monoclonal) (M01) - Protocols



Antibody Reactive Against Recombinant Protein. Western Blot detection against Immunogen (37.73 KDa) .



Detection limit for recombinant GST tagged KLRC3 is approximately 0.3ng/ml as a capture antibody.

#### KLRC3 Antibody (monoclonal) (M01) - Background

Natural killer (NK) cells are lymphocytes that can mediate lysis of certain tumor cells and virus-infected cells without previous activation. They can also regulate specific humoral and cell-mediated immunity. NK cells preferentially express several calcium-dependent (C-type) lectins, which have been implicated in the regulation of NK cell function. KLRC3 is a member of the NKG2 group which are expressed primarily in natural killer (NK) cells

Provided below are standard protocols that you may find useful for product applications.

- [Western Blot](#)
- [Blocking Peptides](#)
- [Dot Blot](#)
- [Immunohistochemistry](#)
- [Immunofluorescence](#)
- [Immunoprecipitation](#)
- [Flow Cytometry](#)
- [Cell Culture](#)

and encodes a family of transmembrane proteins characterized by a type II membrane orientation (extracellular C terminus) and the presence of a C-type lectin domain. The NKG2 gene family is located within the NK complex, a region that contains several C-type lectin genes preferentially expressed on NK cells. Alternative splicing results in multiple transcript variants encoding different isoforms.

#### **KLRC3 Antibody (monoclonal) (M01) - References**

1. Glycosylation-related gene expression is linked to differentiation status in glioblastomas undifferentiated cells. Cheray M, Petit D, Forestier L, Karayan-Tapon L, Maftah A, Jauberteau MO, Battu S, Gallet FP, Lalloue F. Cancer Letters (2011), doi: 10.1016/j.canlet.2011.07.027