

GUCY2C

Mouse monoclonal antibody raised against a partial recombinant GUCY2C.
 Catalog # AT2298a

Specification

GUCY2C - Product Information

Application	WB, E
Primary Accession	P25092
Other Accession	NM_004963.3
Reactivity	Human
Host	mouse
Clonality	monoclonal
Isotype	IgG2b Kappa
Calculated MW	123403

GUCY2C - Additional Information

Gene ID 2984

Other Names

Heat-stable enterotoxin receptor, STA receptor, hSTAR, Guanylyl cyclase C, GC-C, Intestinal guanylate cyclase, GUCY2C, GUC2C, STAR

Target/Specificity

GUCY2C (NP_004954, 24 a.a. ~ 133 a.a) partial recombinant protein with GST tag. MW of the GST tag alone is 26 KDa.

Dilution

WB ~ ~ 1:500 ~ 1000

Format

Clear, colorless solution in phosphate buffered saline, pH 7.2 .

Storage

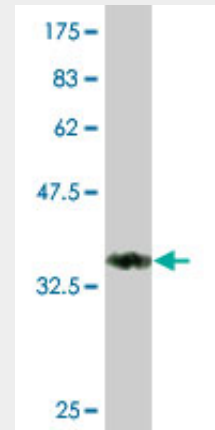
Store at -20°C or lower. Aliquot to avoid repeated freezing and thawing.

Precautions

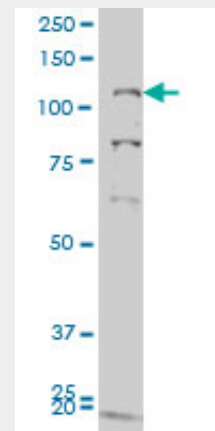
GUCY2C is for research use only and not for use in diagnostic or therapeutic procedures.

GUCY2C - Protocols

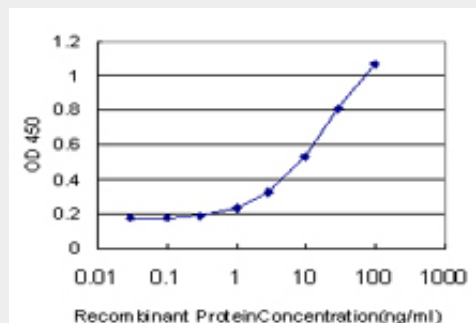
Provided below are standard protocols that you



Antibody Reactive Against Recombinant Protein. Western Blot detection against Immunogen (37.73 KDa) .



GUCY2C monoclonal antibody (M05), clone 1E1 Western Blot analysis of GUCY2C expression in COLO 320 HSR ((Cat # AT2298a)



may find useful for product applications.

- [Western Blot](#)
- [Blocking Peptides](#)
- [Dot Blot](#)
- [Immunohistochemistry](#)
- [Immunofluorescence](#)
- [Immunoprecipitation](#)
- [Flow Cytometry](#)
- [Cell Culture](#)

Detection limit for recombinant GST tagged GUCY2C is approximately 0.3ng/ml as a capture antibody.